

ART AND ARCHITECTURAL REVIEW BOARD (AARB)

Project Data Sheet

Revised February 6, 2025

(Due by 3:00 p.m. on the Friday two weeks before the meeting to AARB@dgs.virginia.gov)

Date Submitted: March 20th 2026, for the April 10, 2026 meeting

Agency Name: Virginia Tech

Project Name, Number, and Location [** must include the project number*]

War Memorial Chapel Guardrail

Blacksburg, Virginia

Project Number: 24-650953

Representatives for the Agency and the Architect/Engineer

Agency Representative:

Sandra P. Graham, AIA

Director of Design

Division of Facilities

Virginia Tech

540-231-4961

spowell@vt.edu

Current Project Status/Phase and Schedule [** must select one of the following*]

- Preliminary Design Submission:
- Final Design Submission:

Construction is anticipated in the Spring of 2026 following required approvals from the Art and Architectural Review Board.

Request for Consent Agenda: Yes: No:

* Please refer to the [AARB Agency Project Submission and Presentation Guidelines](#) – Project Submission Section for additional information and guidance on the Consent Agenda versus Regular Agenda.

PLEASE NOTE: If you did not check the box for Consent Agenda, your project will be posted on the Regular Agenda and the agency will be required to attend the meeting to make a presentation to the board on the day of the meeting. **Presentations are not to exceed 15 minutes.**

Project Description

This project is part of a broader scope of reroofing and masonry repairs at War Memorial Chapel and addresses an existing fall condition at the upper plaza facing the Drillfield. The proposed intervention includes installation of a frameless laminated glass guardrail mounted to the existing low parapet wall. The guardrail is supported by stainless steel mounting plates and standoff connections designed to minimize visual impact while meeting current safety requirements. The design prioritizes life-safety improvements while preserving the architectural character and open views associated with the Chapel and its surrounding memorial landscape.

Architectural Aesthetic:

War Memorial Chapel is prominently situated along the Drillfield and forms a key element of the Alumni Mall axis, terminating views through its arched portal toward the campus core. The surrounding context

includes the Drillfield, Alumni Mall, and a series of significant campus landmarks organized within a formal landscape framework. Constructed in the Collegiate Gothic tradition, the Chapel features Hokie Stone façades, precast detailing, limestone paving, and the sculptural arrangement of pylons and the cenotaph on the upper plaza. The proposed guardrail is carefully integrated at the edge of the upper plaza, maintaining the visual openness of the space and preserving key views to and from the Drillfield. Its minimal and transparent design ensures compatibility with the historic character of the Chapel and its broader setting.

Relationship to Approved Master Plan [** this section must contain information for Board review, do not leave blank*]

The project is consistent with the adopted 2018 Master Plan, Beyond Boundaries 2047: The Campus Plan, which emphasizes stewardship of historic campus resources and continued investment in the core campus precincts. The proposed guardrail supports these objectives by addressing life-safety requirements while preserving the architectural integrity of War Memorial Chapel and its surrounding memorial landscape.

Existing Architectural Context

War Memorial Chapel is prominently situated along the Drillfield and forms a key element of the Alumni Mall axis, terminating views through its arched portal toward the campus core. The surrounding context includes the Drillfield, Alumni Mall, and a series of significant campus landmarks organized within a formal landscape framework. Constructed in the Collegiate Gothic tradition, the Chapel features Hokie Stone façades, precast detailing, limestone paving, and the sculptural arrangement of pylons and the cenotaph on the upper plaza. The proposed guardrail is carefully integrated at the edge of the upper plaza, maintaining the visual openness of the space and preserving key views to and from the Drillfield. Its minimal and transparent design ensures compatibility with the historic character of the Chapel and its broader setting.

AARB History (for return presentations on the same project): [** this section must contain information for Board review, do not leave blank / if this section does not apply to your project, please indicate with N/A*]

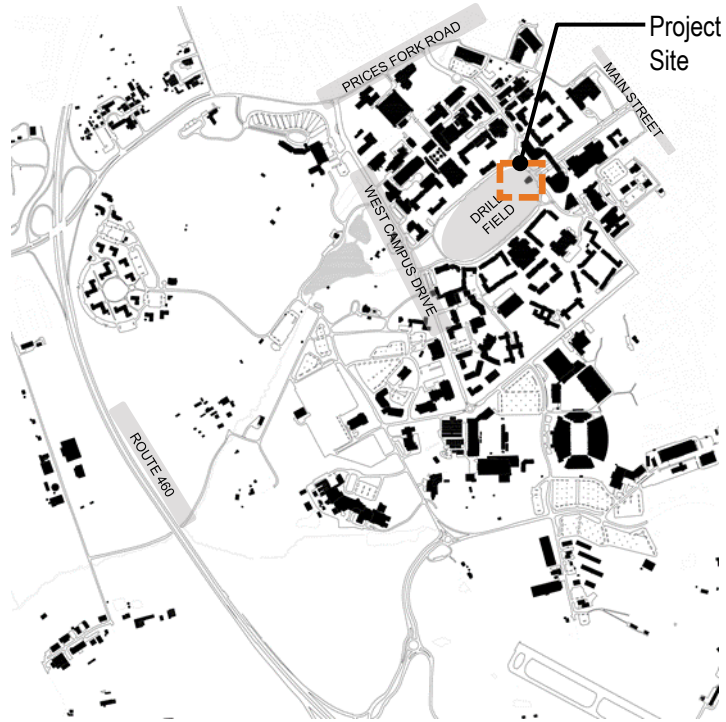
- State when previous presentation(s) were made to the Board on the project. N/A
- Restate previous Board comments. N/A
- Show actions taken to address Board comments; use visuals to compare previous renderings with updates. N/A

DESIGN REVIEW for
**WAR MEMORIAL CHAPEL
GUARDRAIL**

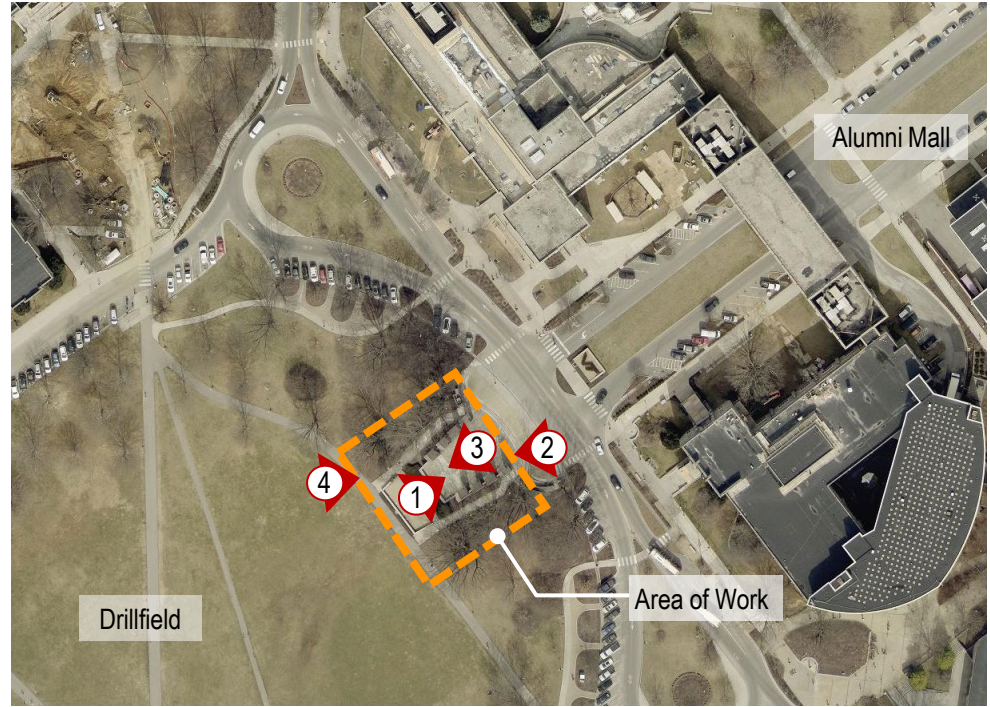
ART AND ARCHITECTURAL REVIEW BOARD

April 3, 2026

PROJECT LOCATION



BLACKSBURG
CAMPUS MAP



PROJECT
SITE

EXISTING CONDITIONS



① VIEW TO THE EAST FROM
MEMORIAL COURT



② VIEW TO THE WEST FROM
DRILLFIELD DRIVE

EXISTING CONDITIONS



③ VIEW TO THE WEST



④ VIEW TO THE EAST FROM THE DRILLFIELD

GLASS GUARDRAIL RENDERING



VIEW TO THE WEST



VIEW TO THE EAST

