

ART AND ARCHITECTURAL REVIEW BOARD (AARB)

Project Data Sheet

Revised February 6, 2025

(Due by 3:00 p.m. on the Friday two weeks before the meeting to AARB@dgs.virginia.gov)

Date Submitted: November 20th, 2025, for the December 5th, 2025 meeting

Agency Name: Virginia Tech

Project Name, Number, and Location [** must include the project number*]

Lane Stadium South End Storefront

Blacksburg, Virginia

Project Number: 26-770622

Representatives for the Agency and the Architect/Engineer

Agency Representative:

Sandra P. Graham, AIA

Director of Design

Division of Facilities

Virginia Tech

540-231-4961

spowell@vt.edu

Current Project Status/Phase and Schedule [** must select one of the following*]

- Preliminary Design Submission: ☐
- Final Design Submission: ☒

Construction is anticipated in the Spring of 2025 following required approvals from the Art and Architectural Review Board.

Request for Consent Agenda: Yes: ☒ No: ☐

* Please refer to the [AARB Agency Project Submission and Presentation Guidelines](#) – Project Submission Section for additional information and guidance on the Consent Agenda versus Regular Agenda.

PLEASE NOTE: If you did not check the box for Consent Agenda, your project will be posted on the Regular Agenda and the agency will be required to attend the meeting to make a presentation to the board on the day of the meeting. ***Presentations are not to exceed 15 minutes.***

Project Description

This project proposes the installation of new storefront glazing within the existing elevator tower opening at the South End Zone of Lane Stadium. The work is part of an elevator modernization effort and is intended to provide weather protection for the upgraded elevator equipment and users accessing the upper levels. Currently, the tower is open to the elements and protected only by a guardrail, which allows rain to enter the elevator shaft. The new aluminum storefront system will be installed within the existing concrete openings and will match the color, profile, and detailing of the storefront systems at the first floor of the stadium to ensure material and visual continuity with adjacent elements. Construction will be coordinated to avoid disruption to surrounding site conditions. The installation will improve elevator equipment weather protection while maintaining the stadium's architectural language.

Architectural Aesthetic:

Lane Stadium is defined by its combination of cast-in-place and precast concrete construction with a Hokie Stone base, reflecting Virginia Tech's Collegiate Gothic identity in a modern athletic context. Throughout the structure, transparent and tinted glazing systems provide light and visual connection to circulation areas and seating levels. The new storefront enclosure will integrate seamlessly within this composition, using materials and finishes consistent with existing glazing assemblies. The elevator tower serves as one of the access points to the South End Zone's upper levels and is framed by controlled landscaping and perimeter metal fencing. Adding the glazing enclosure will visually complete the tower's form while enhancing safety, enclosure, and weather protection in a manner compatible with the stadium's established aesthetic.

Relationship to Approved Master Plan [** this section must contain information for Board review, do not leave blank*]

The project is consistent with the adopted 2018 Master Plan, Beyond Boundaries 2047: The Campus Plan, which identifies the Athletics and Recreation District as a key area for facility modernization and enhancement. The Lane Stadium Storefront project supports the plan's goals of maintaining resilient, safe, and accessible athletic facilities that enrich campus life and ensure the long-term functionality of major university venues. The proposed work complements ongoing renewal efforts within the district and reinforces the architectural continuity of the stadium complex.

Existing Architectural Context

Lane Stadium is located within the Athletics and Recreation District on the Blacksburg campus and is surrounded by related athletic facilities, sports fields, and parking that support event operations. The South End Zone area features paved concourses, defined landscape beds, and circulation paths connecting to adjacent sports facilities. To the east lies the old-growth forest known as Stadium Woods, with athletic event parking areas to the south.

AARB History (for return presentations on the same project): [** this section must contain information for Board review, do not leave blank / if this section does not apply to your project, please indicate with N/A*]

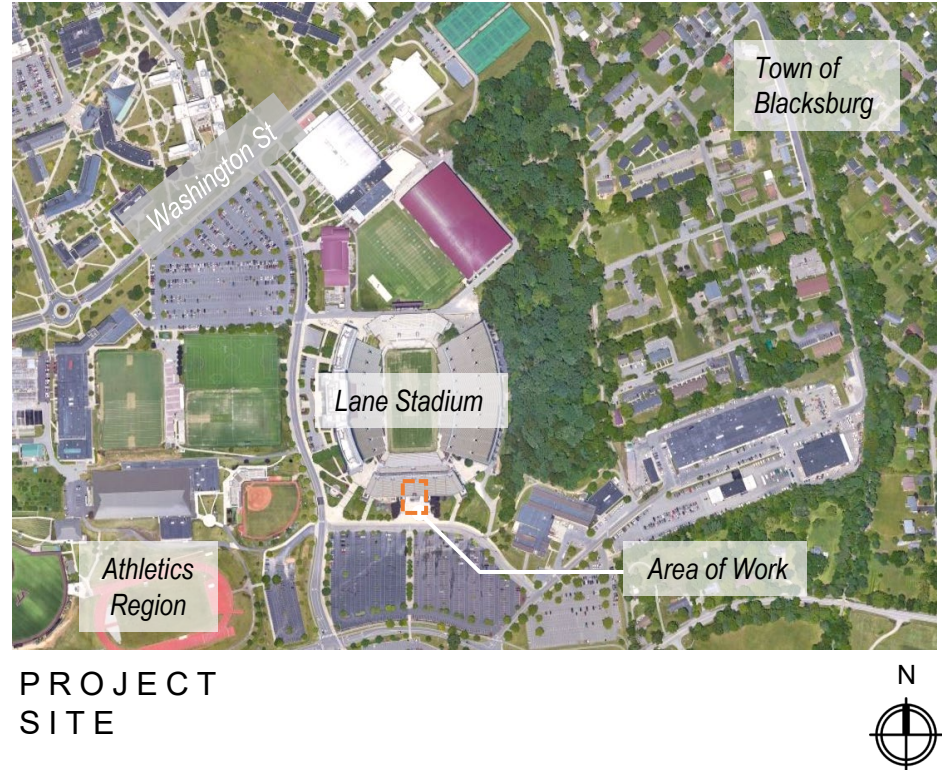
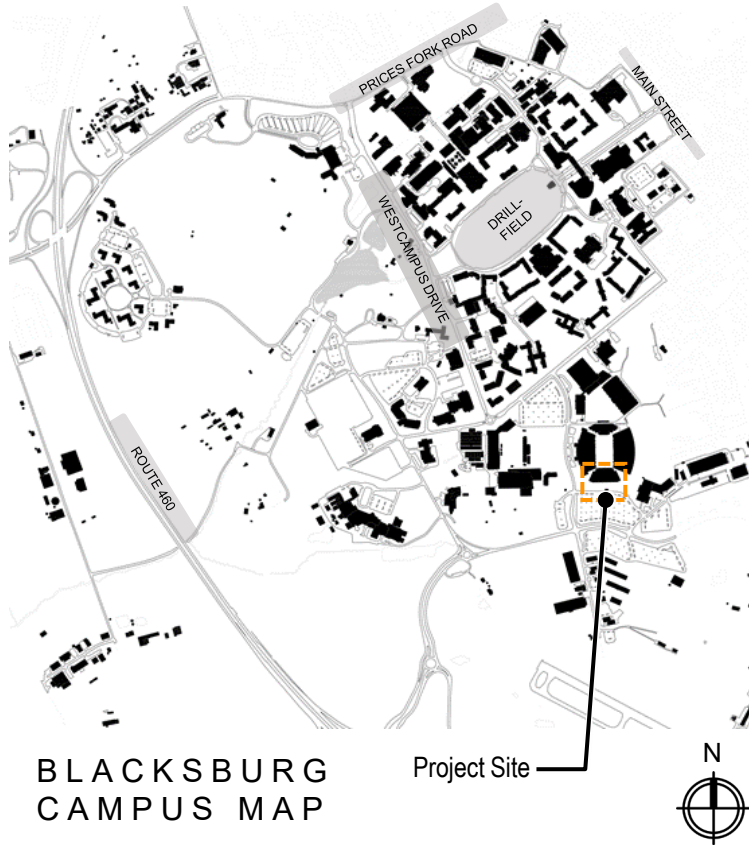
- State when previous presentation(s) were made to the Board on the project. N/A
- Restate previous Board comments. N/A
- Show actions taken to address Board comments; use visuals to compare previous renderings with updates. N/A

DESIGN REVIEW for **LANE STADIUM SOUTH END STOREFRONT**

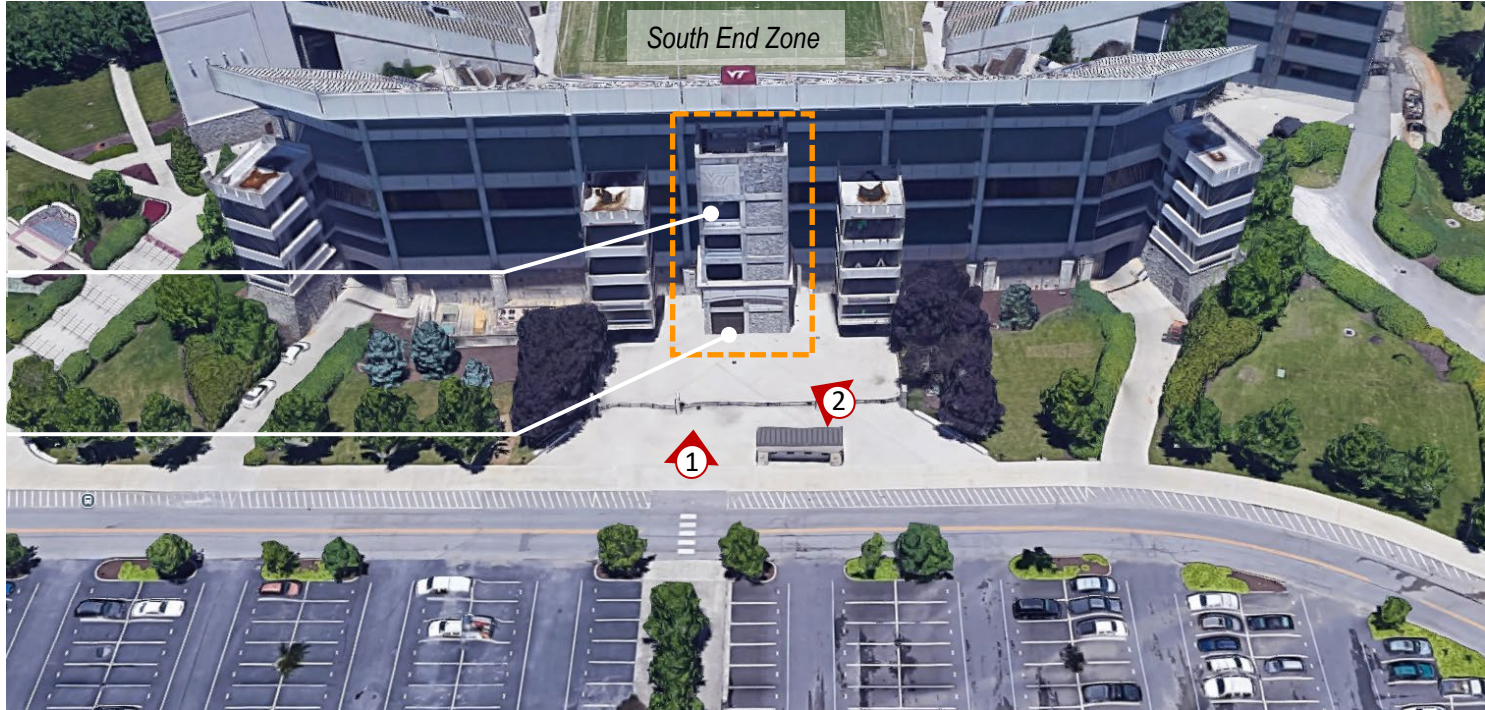
ART AND ARCHITECTURAL REVIEW BOARD

December 5, 2025

PROJECT LOCATION



PROJECT SITE

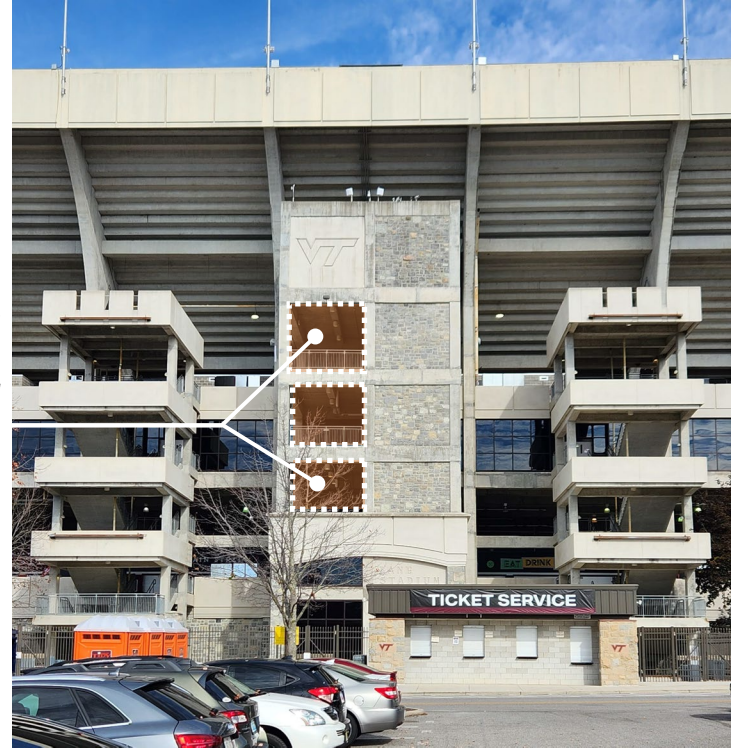


EXISTING CONDITIONS



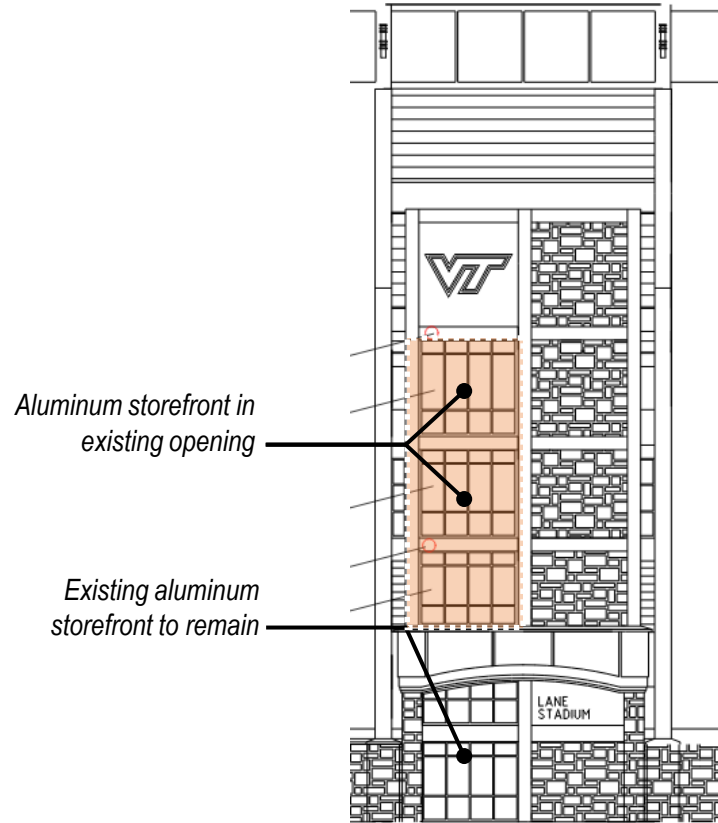
① VIEW TO THE NORTHWEST

Aluminum storefront in existing openings



② VIEW TO THE NORTH

ELEVATION



EXISTING STOREFRONT TO REMAIN