

ART AND ARCHITECTURAL REVIEW BOARD (AARB)

Project Data Sheet

Revised February 6, 2025

(Due by 3:00 p.m. on the Friday two weeks before the meeting to AARB@dgs.virginia.gov)

Date Submitted: November 20th, 2025, for the December 5th, 2025 meeting

Agency Name: Virginia Tech

Project Name, Number, and Location [** must include the project number*]

Virginia Tech-Carilion School of Medicine

Roanoke, Virginia

Project Number: [208-18682-000](#)

Representatives for the Agency and the Architect/Engineer

Agency Representative:

Sandra P. Graham, AIA

Director of Design

Division of Facilities

Virginia Tech

540-231-4961

spowell@vt.edu

Architect/Engineer Representatives:

Craig Spangler, FAIA

Senior Principal

Ballinger

(267) 303-7479

cspangler@ballinger.com

Joe Atkins, AIA

Principal

VMDO Architects

(434) 325-3173

atkins@vmdo.com

Current Project Status/Phase and Schedule [** must select one of the following*]

- Preliminary Design Submission: ☒
- Final Design Submission: ☐

The project is currently in Preliminary Design. Working drawings are expected to begin in 2026, dependent on state authorization. The project is supported through the General Fund, with a pending land contribution from Carilion Clinic.

Request for Consent Agenda: Yes: ☐ No: ☒

* Please refer to the [AARB Agency Project Submission and Presentation Guidelines](#) – Project Submission Section for additional information and guidance on the Consent Agenda versus Regular Agenda.

PLEASE NOTE: If you did not check the box for Consent Agenda, your project will be posted on the Regular Agenda and the agency will be required to attend the meeting to make a presentation to the board on the day of the meeting. ***Presentations are not to exceed 15 minutes.***

Project Description

The Virginia Tech – Carilion School of Medicine (VTCsOM) Expansion project represents a major investment in Virginia Tech's health sciences enterprise and strengthens the university's partnership with Carilion Clinic. Located within the Roanoke Region campus, the new facility will accommodate the planned enrollment growth of the School of Medicine from 196 to 400 students and will advance the university's mission in medical education, research, and community health. The project further strengthens Virginia Tech's presence in Roanoke and supports the Commonwealth's physician workforce needs through expanded educational capacity and state-of-the-art learning environments.

The new School of Medicine facility, approximately 122,726 gross square feet, will be constructed on land contributed by Carilion Clinic and will house modern instructional, clinical, and collaborative spaces designed to support active learning and interdisciplinary engagement. Program elements include lecture halls, team-based learning rooms, clinical simulation suites, anatomy and instructional laboratories, testing and study spaces, administrative offices, and shared commons such as a student life suite, café, and central atrium designed to encourage collaboration and wellness. A structured parking and service level will be integrated into the site's existing grade to preserve a pedestrian-focused entry and campus setting while minimizing the building's visual impact on surrounding streetscapes.

Relocation of the School of Medicine to this new facility will vacate approximately 50,790 square feet within 2 Riverside Circle, allowing that space to be repurposed for programmatic growth of the Fralin Biomedical Research Institute (FBRI). This coordination enables continued advancement of both educational and research missions in alignment with Virginia Tech's long-term health sciences strategy. The project is currently in Preliminary Design, with working drawings anticipated to begin in 2026, pending state authorization. Funding is provided through the General Fund with a land contribution from Carilion Clinic.

Architectural Aesthetic:

The design for the new School of Medicine facility responds to its prominent setting within the Roanoke Region Facilities, framed by Jefferson Street, the Roanoke River, and the Norfolk Southern rail lines. The building composition establishes a strong urban presence for Virginia Tech and reinforces the academic and civic identity of the growing Roanoke Innovation Corridor. The structure is organized into two interrelated volumes: a four-story brick-clad form oriented along the rail corridor and a three-story metal-and-glass form that opens to a landscaped medical lawn and gathering plaza. The massing creates an active urban edge along Jefferson Street while preserving open green space and maintaining visual connection to Mill Mountain and the Roanoke Star. The main entrance aligns with the Jefferson Street bridge and Old Woods Avenue intersection, providing a clear pedestrian approach and visual relationship to the existing facility at 2 Riverside Circle, across the street.

Exterior materials include brick veneer, metal panel systems, and high-performance glazing, complemented by Hokie Stone site walls and structural piers. The material palette reinforces continuity with existing Virginia Tech–Carilion (VTC) buildings while presenting a contemporary architectural expression that communicates innovation and transparency. Large, glazed areas reveal collaborative interior functions, highlighting learning and social spaces and visually connecting interior activity to the public realm. Landscape design integrates pedestrian pathways, shaded seating areas, and native plantings, creating outdoor spaces that support wellness, recreation, and community gathering. The overall design approach emphasizes resilience, sustainability, and long-term durability consistent with Virginia Tech's stewardship goals for its health sciences facilities.

Relationship to Approved Master Plan [** this section must contain information for Board review, do not leave blank*]

The project aligns with Virginia Tech's approved Beyond Boundaries 2047: The Campus Plan, which envisions continued growth of the university's health sciences and medical education programs in partnership with Carilion Clinic. The new School of Medicine facility directly supports the plan's emphasis on modernizing academic environments, fostering interdisciplinary learning, and expanding the university's statewide network of facilities dedicated to research, education, and clinical collaboration. The project contributes to the strategic development of the Roanoke Innovation Corridor and strengthens the connection between Virginia Tech, Carilion Clinic, and the broader healthcare community. It also reinforces the university's goal of promoting sustainable, compact development patterns that encourage pedestrian connectivity and shared open spaces across the Roanoke campus.

Existing Architectural Context

The project site is located within the Roanoke Region Facilities, bounded by the Jefferson Street bridge to the west, Old Woods Avenue to the south, the Roanoke River to the east, and Norfolk Southern rail lines to the north. The area lies within the South Jefferson Redevelopment Area and the Roanoke River and Railroad Historic District, which includes the historic Virginia Station across the rail corridor. The Roanoke Region Facilities area has evolved into a mixed-use academic and healthcare environment that includes Carilion Roanoke Memorial Hospital, Radford University Carilion, and the existing facility at 2 Riverside Circle.

The new School of Medicine facility will complement this context through a contemporary interpretation of Virginia Tech's architectural vocabulary, employing brick, a metal panel system, and Hokie Stone to harmonize with adjacent facilities while contributing a distinctive institutional presence along Jefferson Street. Site design emphasizes walkability, accessible open space, and a connected pedestrian network that links the building to surrounding medical and research facilities. Public art will be considered to mark the campus entry and enhance the sense of arrival appropriate to the university's civic and institutional role within the city. The relocation of the medical school and the strategic reuse of vacated space in the facility at 2 Riverside Circle will enable balanced advancement of Virginia Tech's medical education and research missions within the evolving Roanoke Region Facilities campus.

AARB History (for return presentations on the same project): [** this section must contain information for Board review, do not leave blank / if this section does not apply to your project, please indicate with N/A*]

- State when previous presentation(s) were made to the Board on the project. N/A
- Restate previous Board comments. N/A
- Show actions taken to address Board comments; use visuals to compare previous renderings with updates. N/A

DESIGN REVIEW for **EXPAND VIRGINIA TECH - CARILION SCHOOL OF MEDICINE**

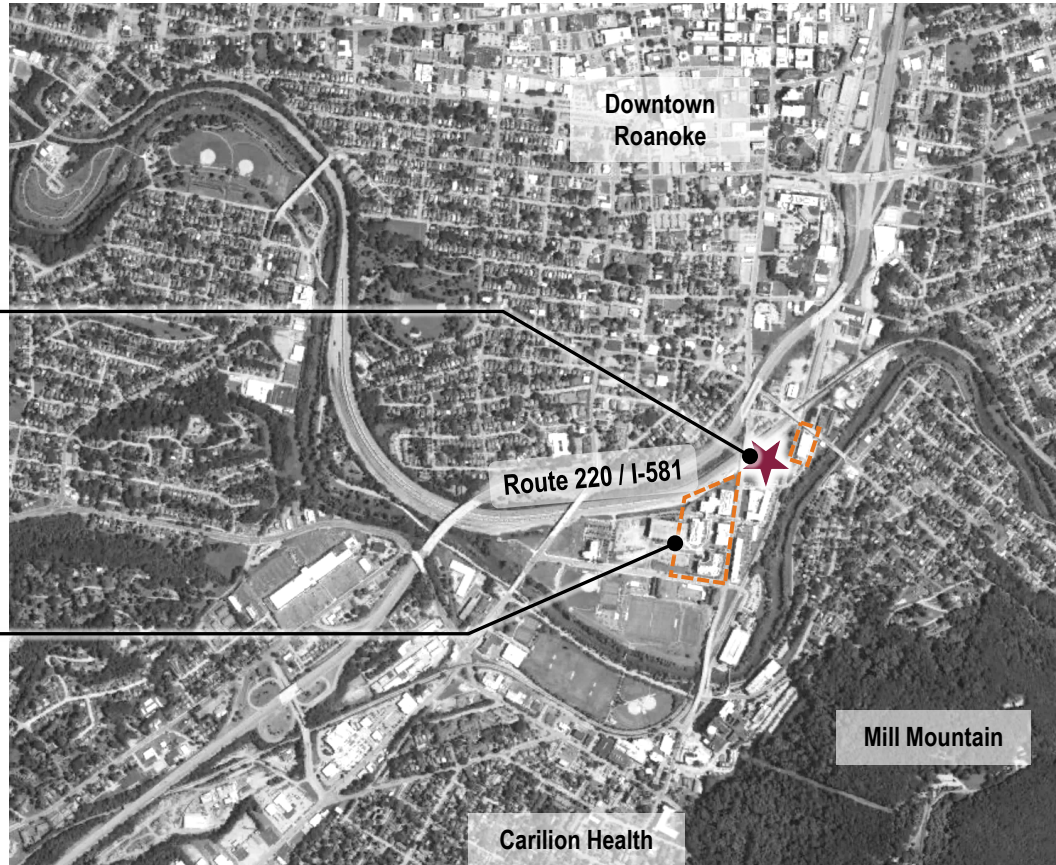
ART AND ARCHITECTURAL REVIEW BOARD

December 5, 2025

PROJECT LOCATION

SITE

Roanoke Region
Facilities



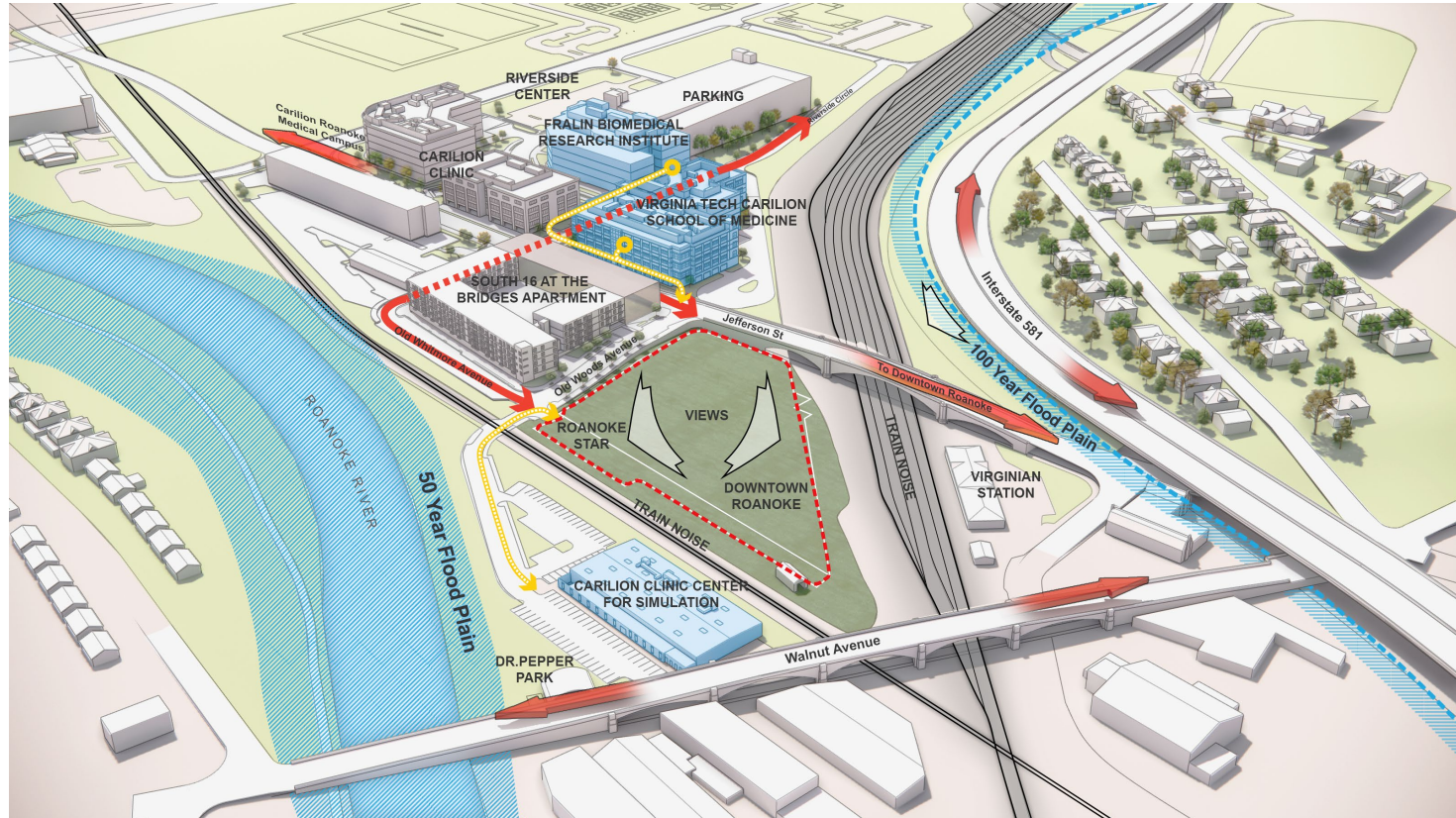
PROJECT SITE



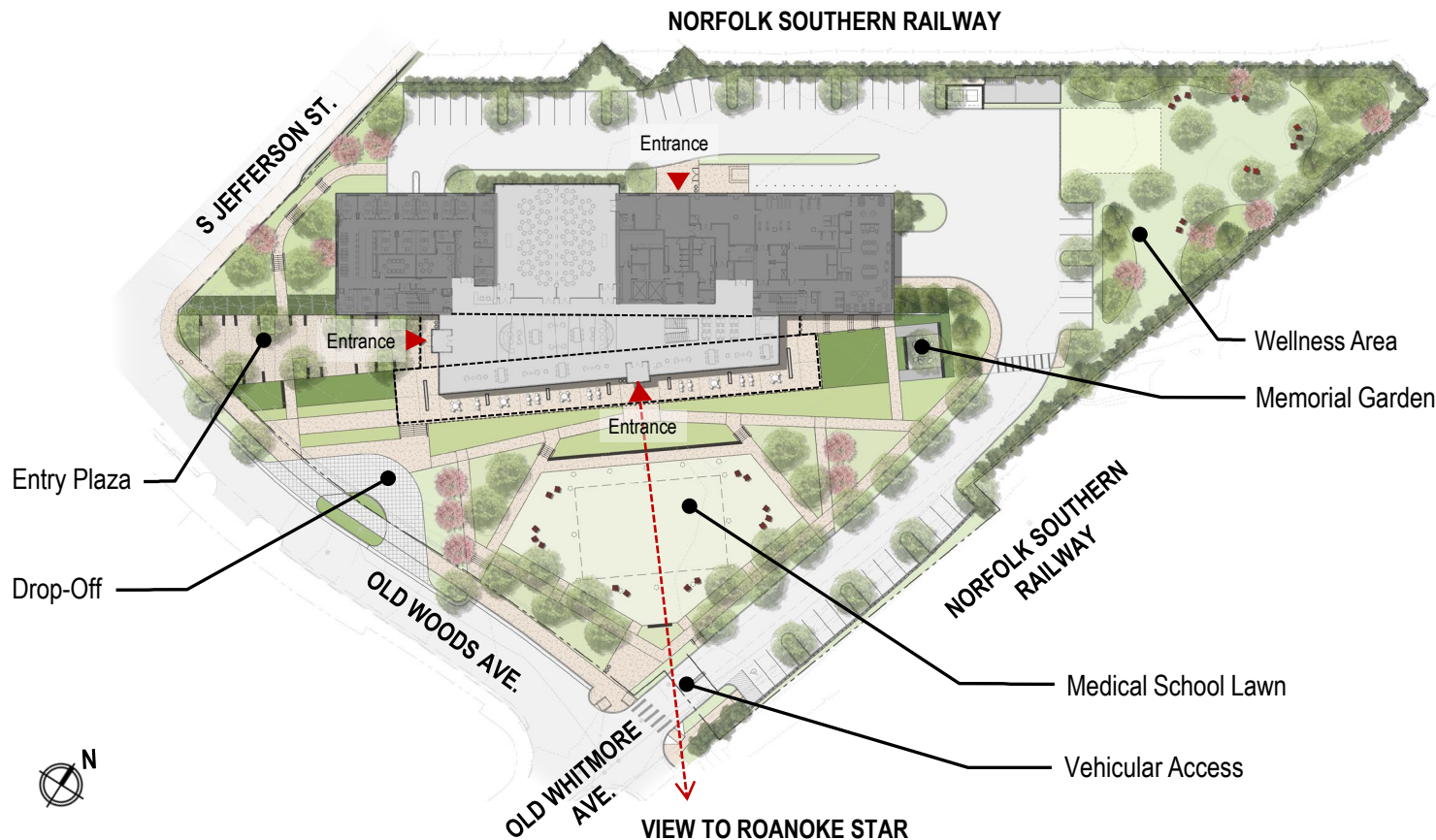
EXISTING CAMPUS CONTEXT



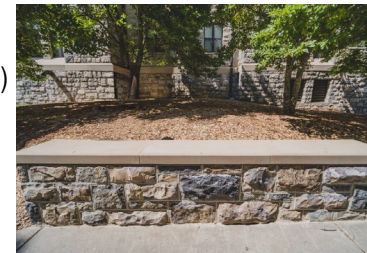
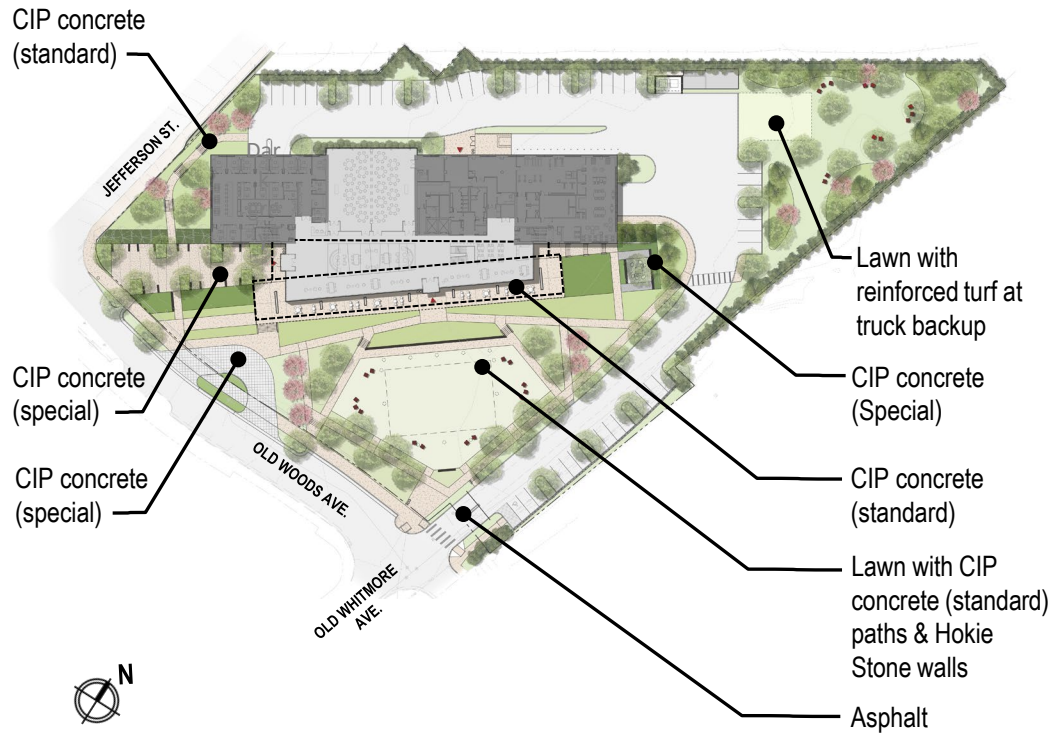
SITE ANALYSIS



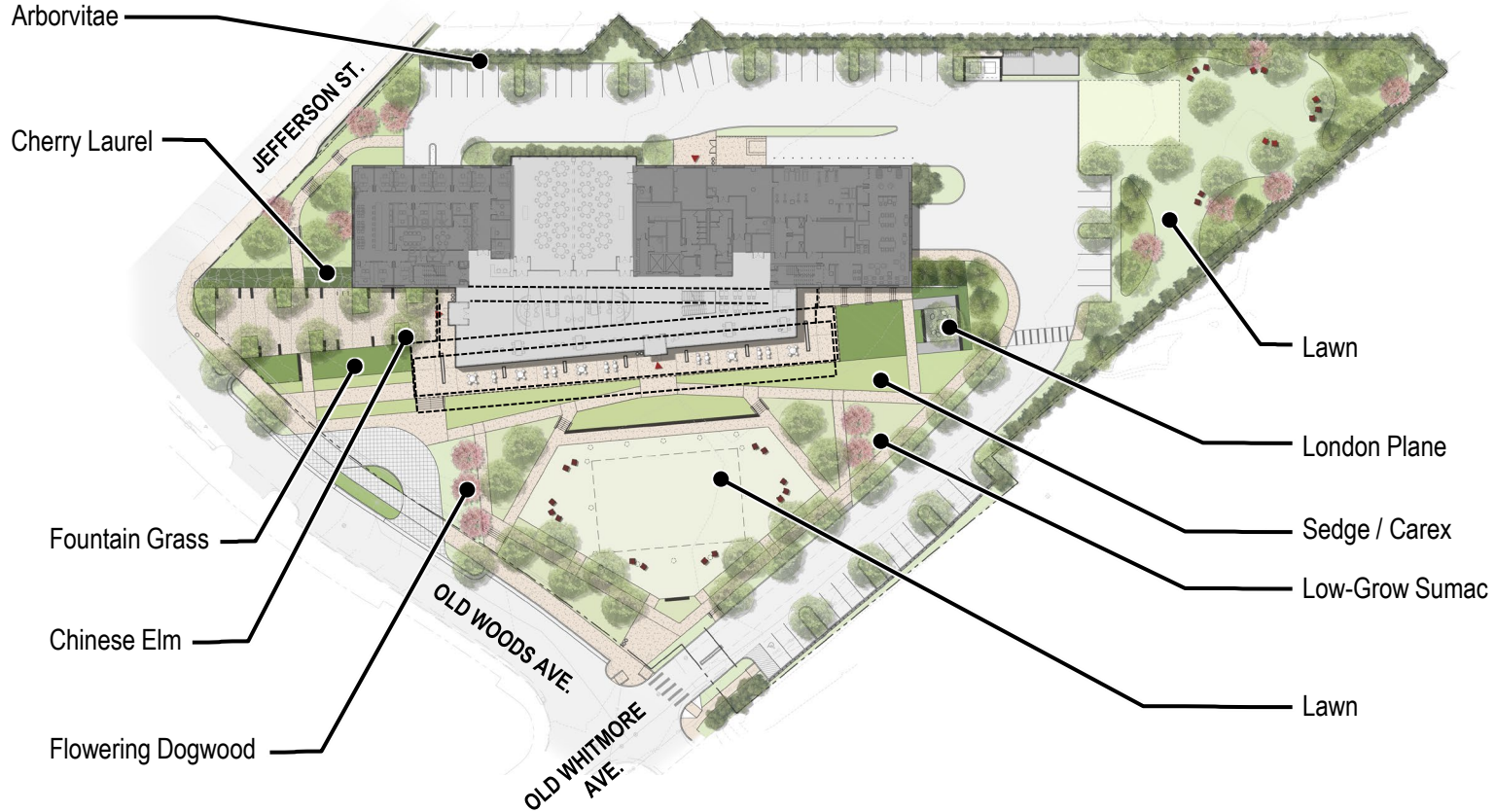
SITE PLAN



SITE PLAN-MATERIALS

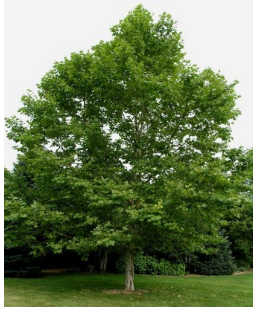


SITE PLANTING



PLANTING PALETTE

TREES



Platanus x hispanica
London Plane



Ulmus parvifolia
Chinese Elm



Cornus florida
Flowering Dogwood

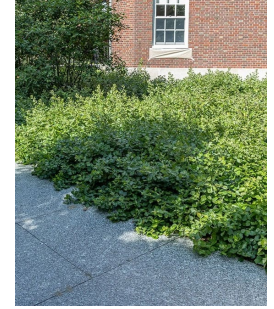
SHRUBS



Thuja occidentalis
American Arborvitae



Prunus laurocerasus
Cherry Laurel



Rhus aromatica
Gro-Low Sumac

PERENNIALS / GRASSES



Pennisetum
Fountain Grass



Carex Pennsylvanica
Sedge

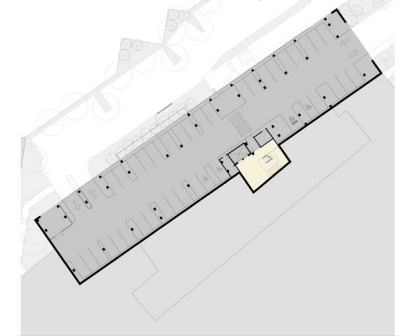
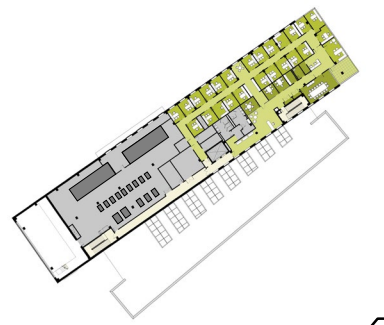
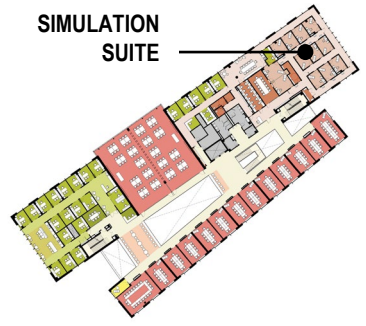


Nepeta
Catmint

FLOOR PLANS



■ WORKPLACE ■ COMMONS ■ RESEARCH
■ FORMAL & INFORMAL LEARNING ■ STUDENT LIFE



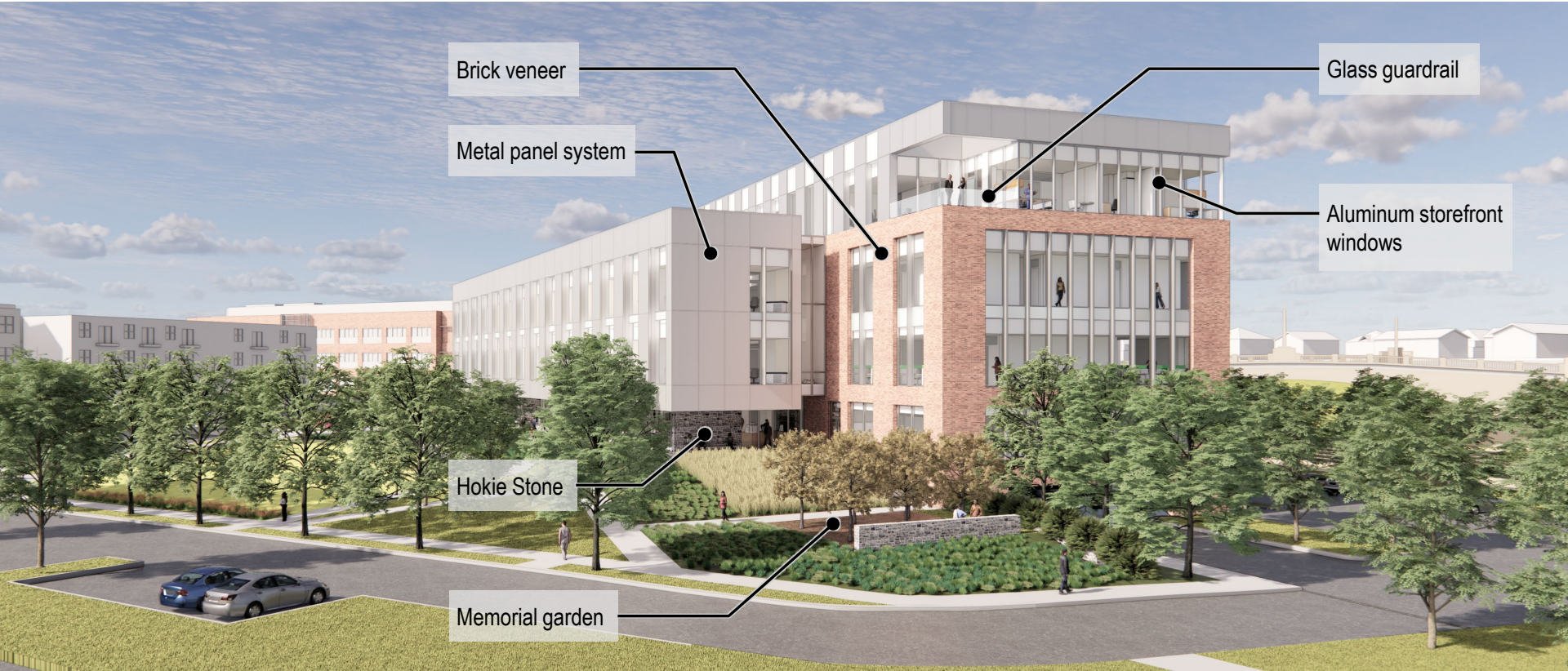
EXTERIOR RENDERING

VIEW TO THE NORTHWEST



EXTERIOR RENDERING

VIEW TO THE SOUTHWEST



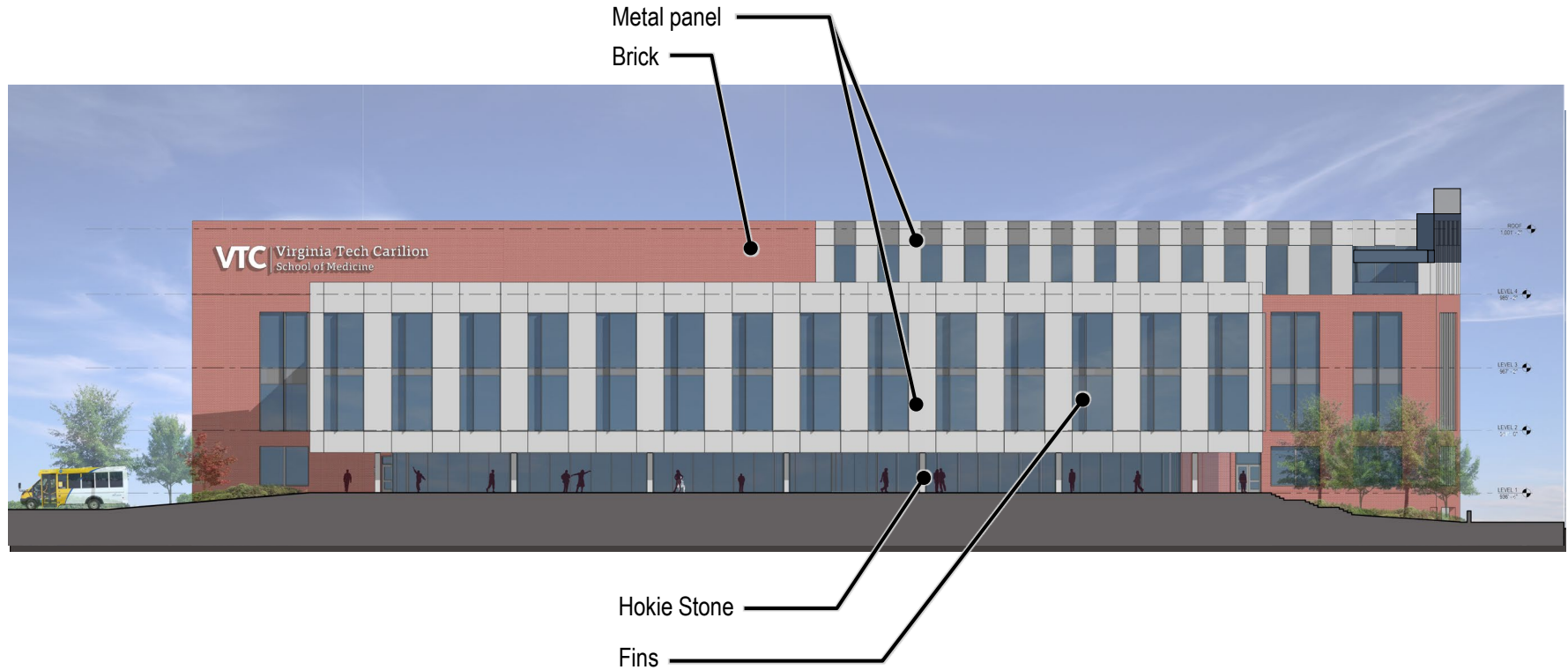
EXTERIOR RENDERING

VIEW TO THE SOUTH

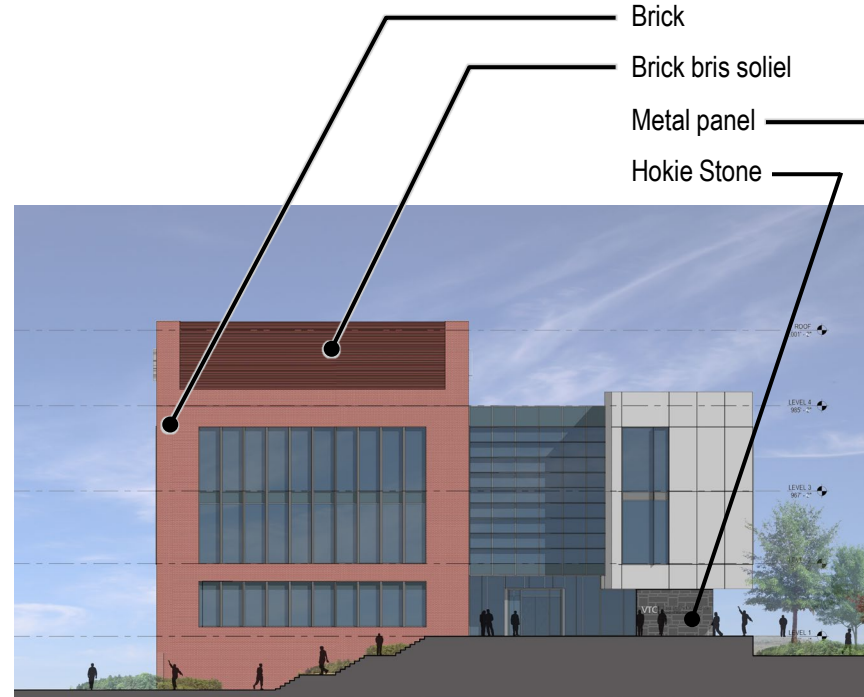


EXTERIOR ELEVATION

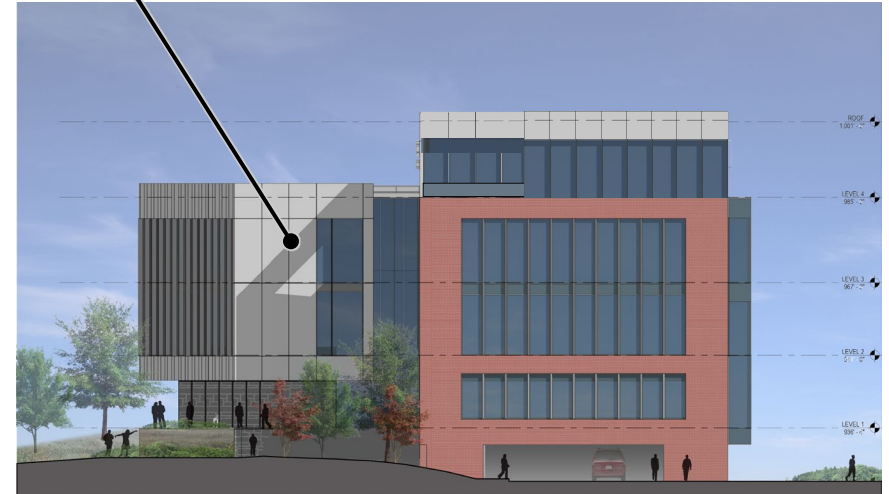
EAST ELEVATION



EXTERIOR ELEVATION



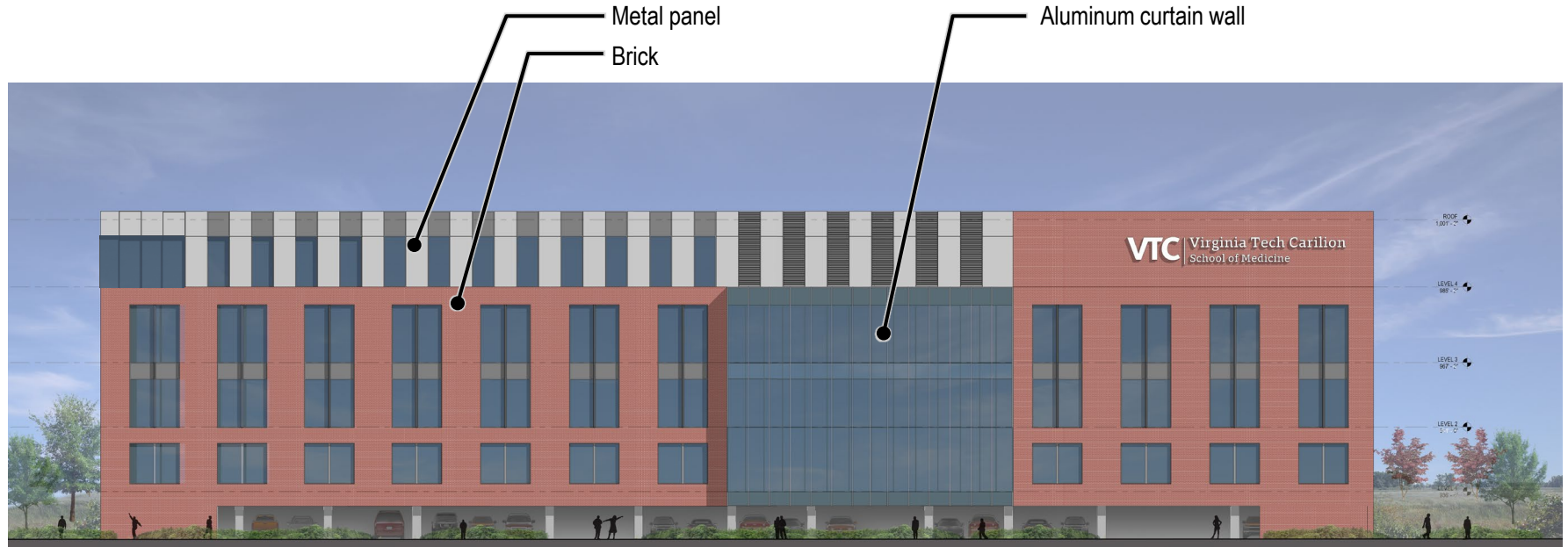
SOUTH ELEVATION



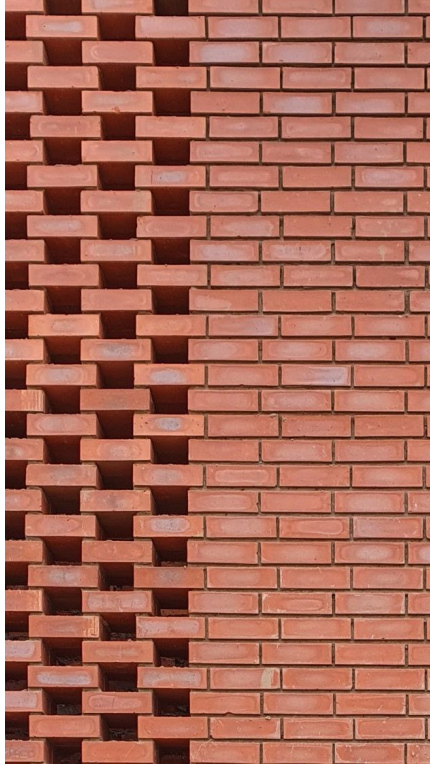
NORTH ELEVATION

EXTERIOR ELEVATION

WEST ELEVATION



EXTERIOR MATERIALS



Masonry



Hokie Stone



Metal panel



Fins

EXTERIOR RENDERINGS

