

ART AND ARCHITECTURAL REVIEW BOARD (AARB)

Project Data Sheet

Revised February 6, 2025

(Due by 3:00 p.m. on the Friday two weeks before the meeting to AARB@dgs.virginia.gov)

Date Submitted: May 22, 2026

Agency Name: Old Dominion University

Project Name, Number, and Location [** must include the project number*]

Name: Old Dominion University – Construct New Engineering & Arts Building

Number: 221-18741-000

Location: 4451 HAMPTON BOULEVARD, NORFOLK, VA 23529

Representatives for the Agency and the Architect/Engineer

(Include names, titles, phone numbers, email addresses, and physical addresses—including contact information for the day of the meeting)

Michael Johnson – ODU, Senior Director of Design & Construction

(757) 683-5682

M2johnso@odu.edu

4401 Powhatan Avenue, Norfolk, VA, 23529

Nick Preble – ODU, Senior Capital Project Manager

(757) 683-3011

npreble@odu.edu

4401 Powhatan Avenue, Norfolk, VA, 23529

Neal Kessler – ODU, Director of Campus Planning

(734) 693-1622

nkessler@odu.edu

4401 Powhatan Avenue, Norfolk, VA, 23529

Jean Kennedy-Sleeman – ODU, University Architect

(734) 328-2930

jkennedy@odu.edu

4401 Powhatan Avenue, Norfolk, VA, 23529

Pete O'Shea, O'Shea Wilson Site Works, Principal

(434) 923-8100

oshea@siteworks-studio.com

6693 Louisa Road, Charlottesville VA 22947

Joseph Atkins, VMDO Architects, Project Principal-in-Charge

(434) 296-5684

atkins@vmdo.com

200 E. Market St. Charlottesville Virginia 22902

Dade Van Der Werf, VMDO Architects, Principal

(434) 296-5684

vanderwerf@vmdo.com

200 E. Market St. Charlottesville Virginia 22902

Gary McCluskie, Diamond Schmitt, Arts Principal-in-Charge

(416) 862-8800
gmccluuski@dsai.ca
384 Adelaide St W Suite 100, Toronto, ON M5V 1R7, Canada

Craig Spangler, Ballinger, Engineering Principal-in-Charge
O: (215) 446-0400
cspangler@ballinger.com
1650 Arch Street 23rd Floor Philadelphia, PA 19103

Current Project Status/Phase and Schedule [* must select one of the following]

- Preliminary Design Submission:
- Final Design Submission:

Status/Phase = Preliminary Design

Schedule - next milestone date: 100% Working Drawings

Request for Consent Agenda: Yes: No:

* Please refer to the [AARB Agency Project Submission and Presentation Guidelines](#) – Project Submission Section for additional information and guidance on the Consent Agenda versus Regular Agenda.

PLEASE NOTE: If you did not check the box for Consent Agenda, your project will be posted on the Regular Agenda and the agency will be required to attend the meeting to make a presentation to the board on the day of the meeting. **Presentations are not to exceed 15 minutes.**

Project Description

(Area, number of stories, building and roof forms, exterior materials, etc.)

Old Dominion University’s new Engineering and Arts Building is located in the southeastern quadrant of the ODU campus in Norfolk, Virginia, adjacent to existing engineering facilities and within an easy walk of allied arts venues. The site for the building lies along the eastern periphery of a large campus greenspace (The Oval) and sits at the intersection of significant campus paths. Currently the site of an existing surface parking lot, this location is one of the few pieces of land unencumbered by buildings within the dense core of campus. Its proximity to and visibility from Hampton Boulevard to the east makes it well-suited to host the kinds of active public programs and events it is envisioned to support.

The building is comprised of a three-story rectilinear brick volume that is an aggregation of programmatic masses and that adheres to the predominant orientation and general scale of the surrounding campus buildings. Due to the site’s location in the 500-year flood zone, the building is elevated on a plinth that establishes a heightened civic presence amongst its neighbors while providing the necessary resilience measures. A transparent lobby zone in the middle of the building serves to link the public facing side of the building with the interior of the campus while also revealing the figural form of the 800-seat convening hall at the center of the design. The building is capped with an undulating architectural screen wall that merges with the hall’s fly tower, screens the mechanical penthouse and rooftop units, and distinguishes the rooftop landscape from the main building mass below.

The 141,458 GSF building is designed to represent the convergence of two ODU Colleges – the College of Engineering and Technology and the College of Arts and Letters – integrating disciplines and unifying knowledge in a collaborative partnership. Primary programmatic elements include

800-seat convening hall, R1 engineering research laboratories and innovative educational spaces, such as heavy-duty high-bay facilities, a motion-capture lab, an AR/VR lab, flexible wet/dry laboratories and support, and student design, fabrication and exhibition spaces. Three large, double-height shared studio spaces anchor the major corners of the building and offer views into the creative activities going on inside. Both hemispheres of the building are served by their own dock and service yard to minimize the impact of deliveries and support activities from having to cross the public lobby.

Architectural Aesthetic:

(What does it look like and why?)

A thorough investigation of the surrounding campus buildings and landscapes and a close inspection of the campus design guidelines yielded a strong aesthetic impulse to connect with architectural traditions and codified design standards at ODU while casting a unique building expression that highlights the creative ingenuity of Engineering and Arts at Old Dominion. Using the overlapping concepts of musical notation and engineering graphing, the design seeks to signify a quiet resonance with the activities housed within.

The design is guided by a spirit of joyful exuberance underpinned by efficiency and rigor. A regularized construction module driven by lab planning requirements and informed by idealized panelized brick dimensions sets a consistent rhythm for all four major building elevations. This rational panel interval allows for adjustment to the unique interior and exterior conditions of a given location by employing a range of infill panels and varying panel orientations. Solid brick panels alternate with glazed curtainwall panels to create zones of varying transparency and openness, while the stacking and offsetting of panels help highlight grand architectural spaces and their subordinate support spaces. Metal panels and extruded metal fins help to tune the envelope to the demands of daylighting and desirable views into and out of the building. The underlying structure of the panel system echoes the scale of neighboring building's fenestration while establishing a new vocabulary for brick construction at ODU. Brick, metal panel, glazing and fins are all planned to match existing campus standards. Curtainwall glazing with deep vertical fins accentuate the large public commons at the heart of the building.

The base of the Engineering and Arts Building is expressed as an occupiable plinth that embraces the surrounding campus walks and landscape spaces and extends the usefulness of the studio and shops at ground level beyond the building perimeter. Like recently completed projects on campus, the plinth is expressed as an upward expansion of the ground plane and is articulated to appear distinct from the building. Brick veneer wraps the vertical faces of the plinth and articulates the terraces, stairs, ramps and occupiable steps around the perimeter of the building. Raised planters are integrated into the edges of the plinth to provide shade, create inviting outdoor spaces, and help shape circulation routes.

The roofscape of the building is intended to complement the main brick volumes below, while contrasting sufficiently to establish its own ethereal presence. Eased corners and a continuous, fluid perimeter wall helps announce the upper volumes' relationship with the smooth contours of the Convening Hall while also diminishing the overall height of the areas that mask rooftop mechanical units and other building systems. Taken together, the plinth, main building volume,

and the rooftop elements reflect the campus design guideline's ethos of reinforcing the diagram of base/body/cap.

Relationship to Approved Master Plan [** this section must contain information for Board review, do not leave blank*]

(Include the date of the master plan and how this project relates to a larger program effort, if applicable)

The recently adopted 2025-2035 ODU Master Plan provides comprehensive guidance on the siting of buildings, the distribution and design of landscape spaces, the coordination of campus circulation routes, and the integration of new buildings into the evolving ODU campus context. The Engineering and Arts Building occupies one of the key sites slated for development in the master plan, and the design adheres to the planning recommendations made therein. With the construction of the Engineering and Arts Building, ODU will gain ground on the near- and long-term objectives for both the Engineering and Arts programs as presented in the master plan.

Key to the integration of the new building is its respect for current and future pedestrian paths. The E+A building is situated such that key routes through the site are maintained and/or enhanced. The Engineering and Arts Building is specifically highlighted in the Master Plan as a facility intended to provide a welcoming architectural portal into ODU from the Hampton Boulevard side of campus. Parking and vehicular access is orchestrated to minimize conflicts with pedestrian routes, and the building takes advantage of proximity to significant local roads and structured parking facilities for ease of visitor access.

The major east-west campus path – Monarch Walk – has been modified from its current configuration to bypass the incursion of additional parking to the east of the new building and is now proposed to move to a more pedestrian-friendly area between Lions Child Study Center and Hampton Boulevard. The existing Virginia Beach Memorial, which is located between Perry Library and Lot 29 will be relocated by the University outside this project, ahead of the start of construction.

Existing Architectural Context

(The surrounding community, historic significance, adjacent site, the identity of the agency or institution, etc.)

The New Engineering and Arts Building will be located in the southeastern quadrant of the ODU campus. The project site is bounded on the east side by the Lions Child Study Center and the Batten Arts and Letters Building, on the south side by the Gornto Hall Building and Pond, and on the west by The Perry Library and the Engineering Systems Building. The site is currently occupied by a surface parking Lot (Lot 19) and the Virginia Beach Memorial. The site is located adjacent to and will engage with The Oval, a prominent quad space that serves as a significant node for campus activities. Kaufman and Monarch Halls sit north of the project site and serve as a northern edge to the main east-west Monarch Walk that bounds the project site's northern edge. Two vehicular routes – 45th Street from the east and another campus lane from the south – provide access to the site and support both visitor and service paths to the E+A Building.

AARB History (for return presentations on the same project): [** this section must contain information for Board review, do not leave blank / if this section does not apply to your project, please indicate with N/A*]

This will be the second review of this project during the preliminary design phase.

- **Meeting Dates previously presented to the Board:** November 7, 2025

- **Previous Board comments:**
 - Provide further details regarding how this project connects and relates to the surrounding structures.
 - Consider incorporating the curvilinear and angular forms of the surrounding structures to mitigate the rectangularity of the design.
 - Further study the paving patterns as they transition from the oval to the buildings.
 - Explore ways to elevate the form of the north and south entry points.
 - Further review how the brick panels interact with the curtain wall system.
 - Study ways to marry the engineering and arts concept either literally or abstractly.

Old Dominion University Construct New Engineering and Arts Building

Project Number: 221-18741-000

Location: 4451 HAMPTON BOULEVARD, NORFOLK, VA 23529

AARB Review June 05, 2026

V M D O

**diamond
schmitt**

ballinger



Construct New Engineering and Arts Building: Presentation Team



Old Dominion University
Senior Director – Capital Design
And Construction

**Michael
Johnson**



Old Dominion University
Director of Campus Planning

**Neal
Kessler**



VMDO Architects
Architect of Record

**Joe
Atkins**

AIA, LEED AP BD+C



Ballinger
Engineering Consultant

**Craig
Spangler**

FAIA, LEED AP



Diamond Schmitt Architects
Arts Consultant

**Gary
McCluskie**

AIA, FRAIC



Siteworks
Landscape Architect

**Pete
O'Shea**

FASLA

Immediate Site Context



ENGINEERING SYSTEMS

PERRY LIBRARY

GORNTO HALL

BATTEN ARTS AND LETTERS

DARDEN COLLEGE OF EDUCATION

CHILDY STUDY CENTER

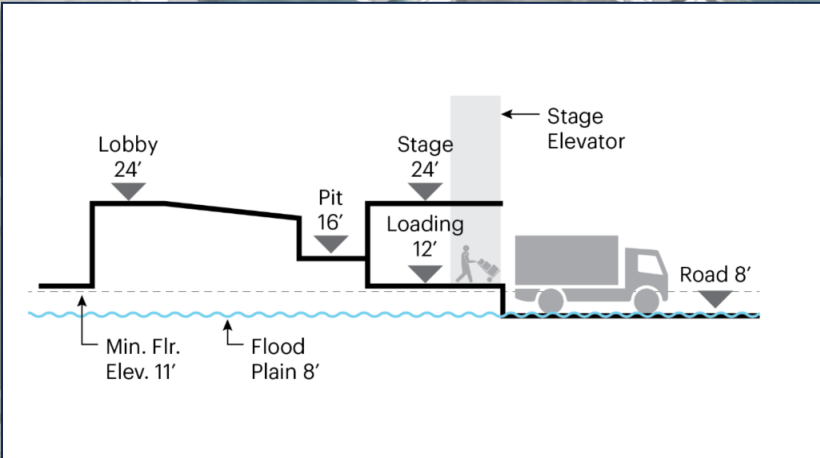
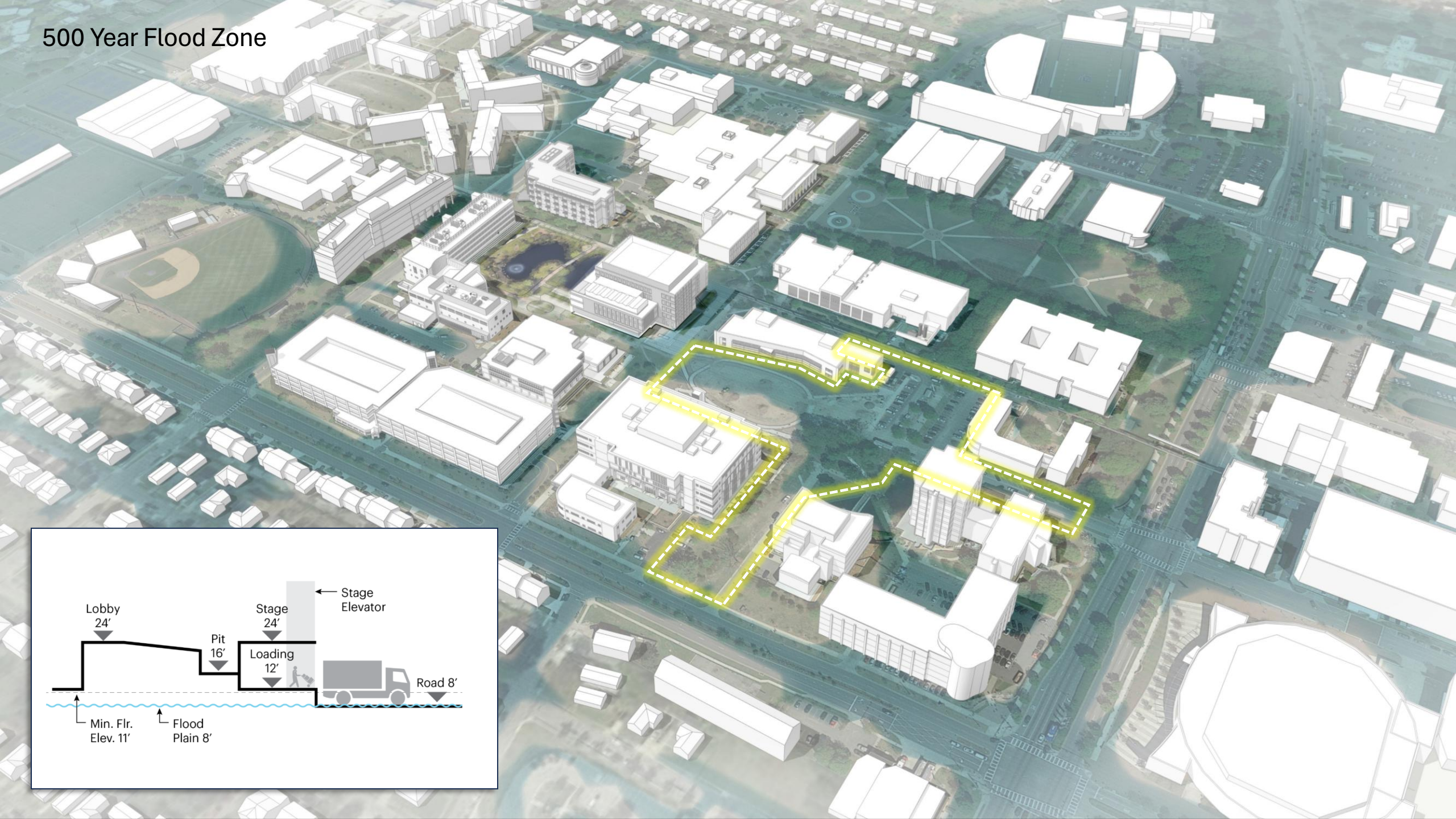
LOT 19

45th Street

Hampton Boulevard

43rd Street

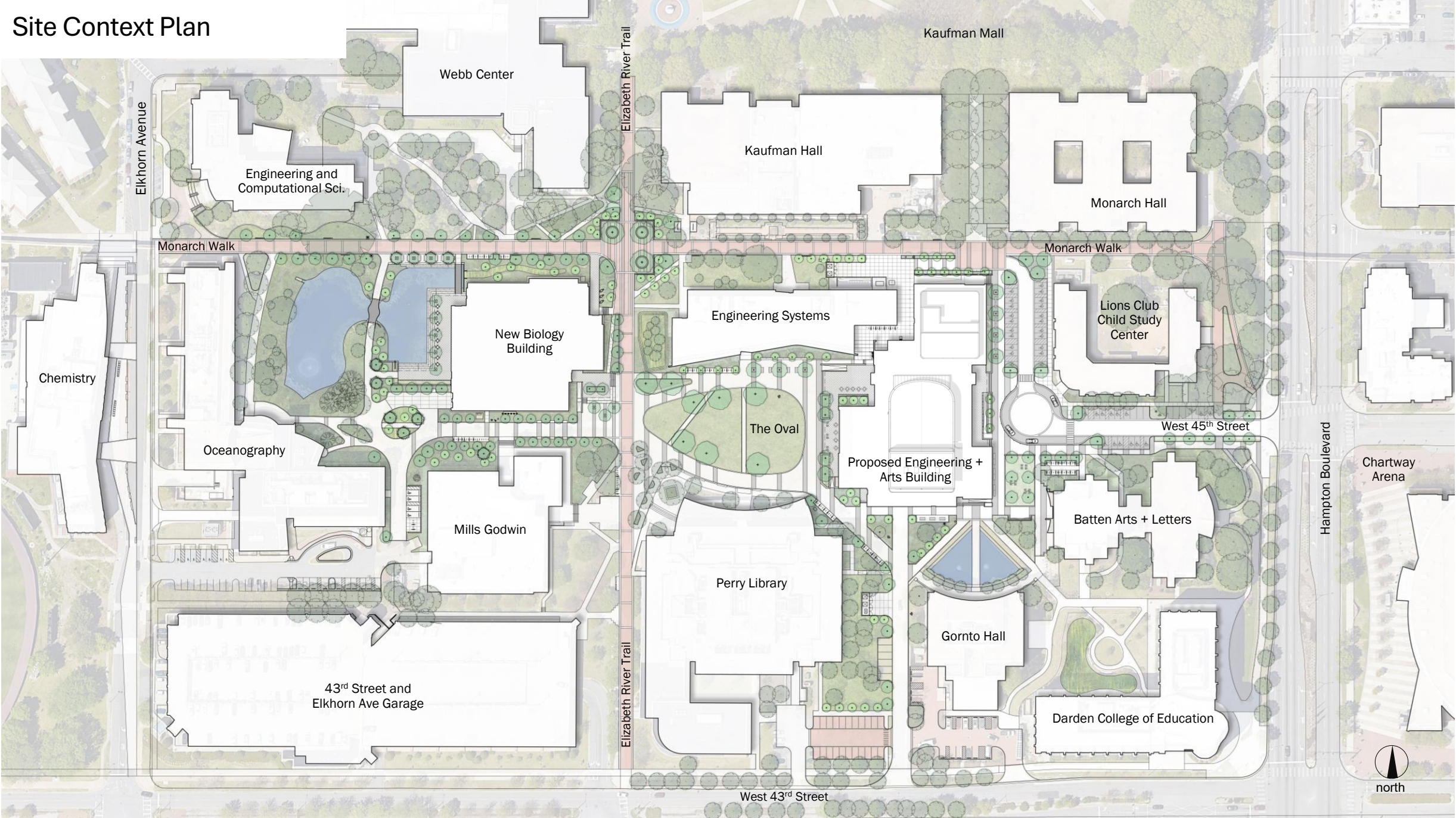
500 Year Flood Zone



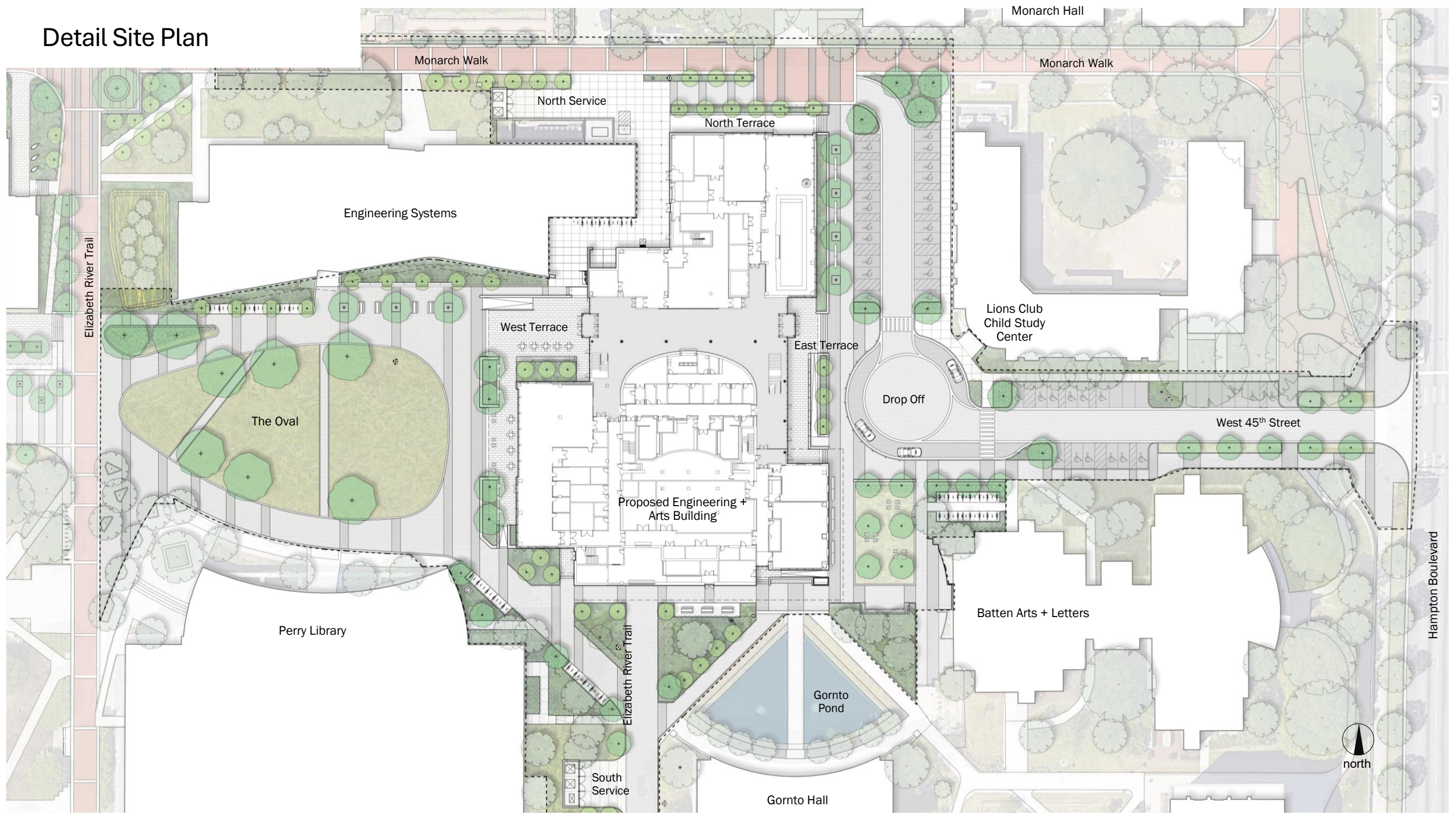
Immediate Site Context



Site Context Plan



Detail Site Plan



Monarch Walk

Monarch Walk

North Service

North Terrace

Engineering Systems

Elizabeth River Trail

The Oval

West Terrace

East Terrace

Lions Club
Child Study
Center

Drop Off

West 45th Street

Proposed Engineering +
Arts Building

Perry Library

Elizabeth River Trail

Batten Arts + Letters

Hampton Boulevard

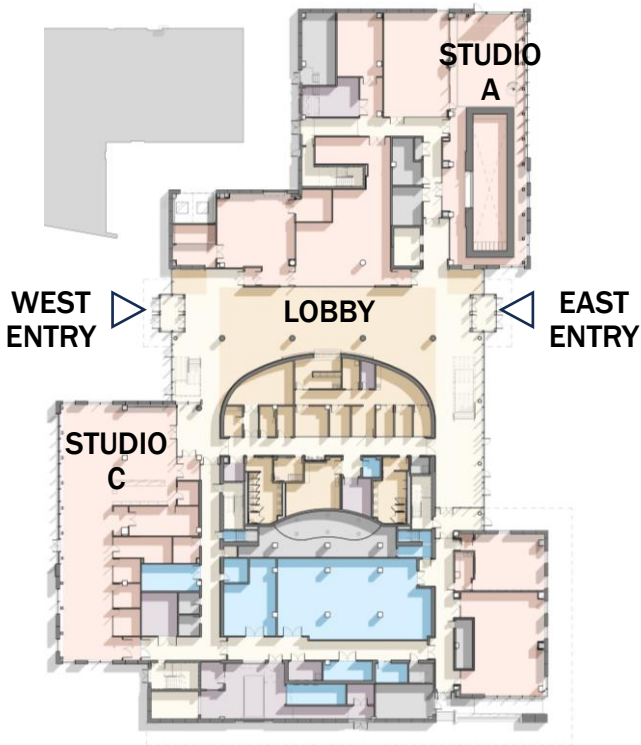
Gornto Pond

Gornto Hall

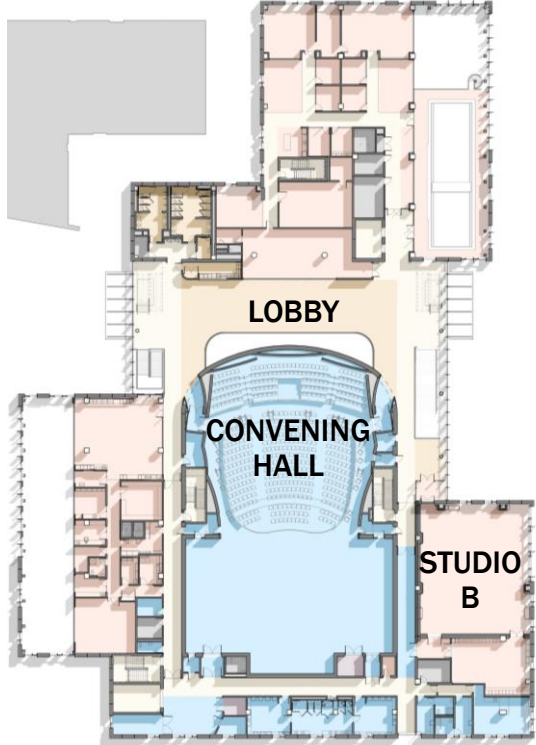
South
Service



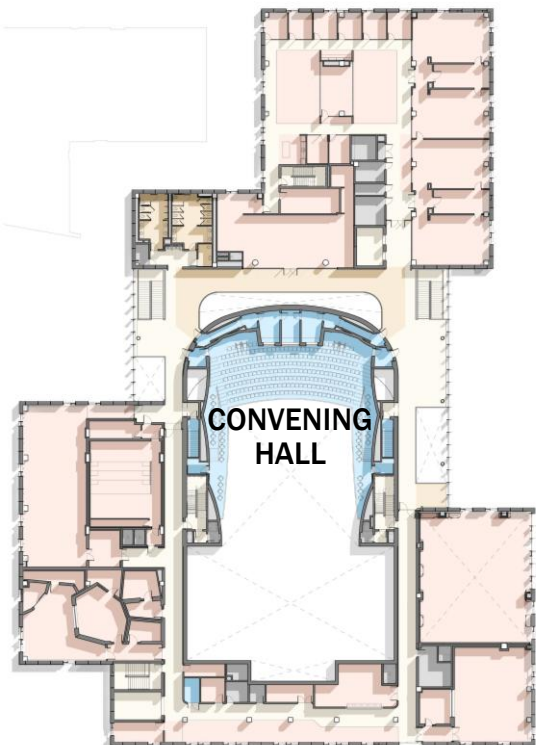
Floor Plans



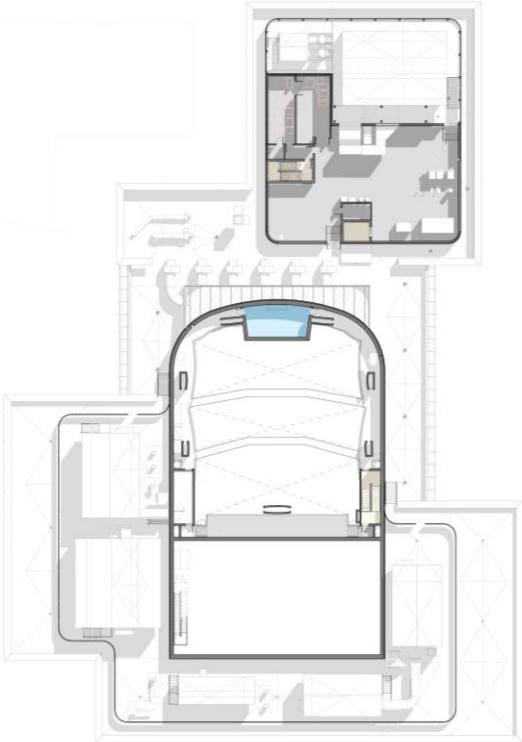
FIRST FLOOR



SECOND FLOOR



THIRD FLOOR

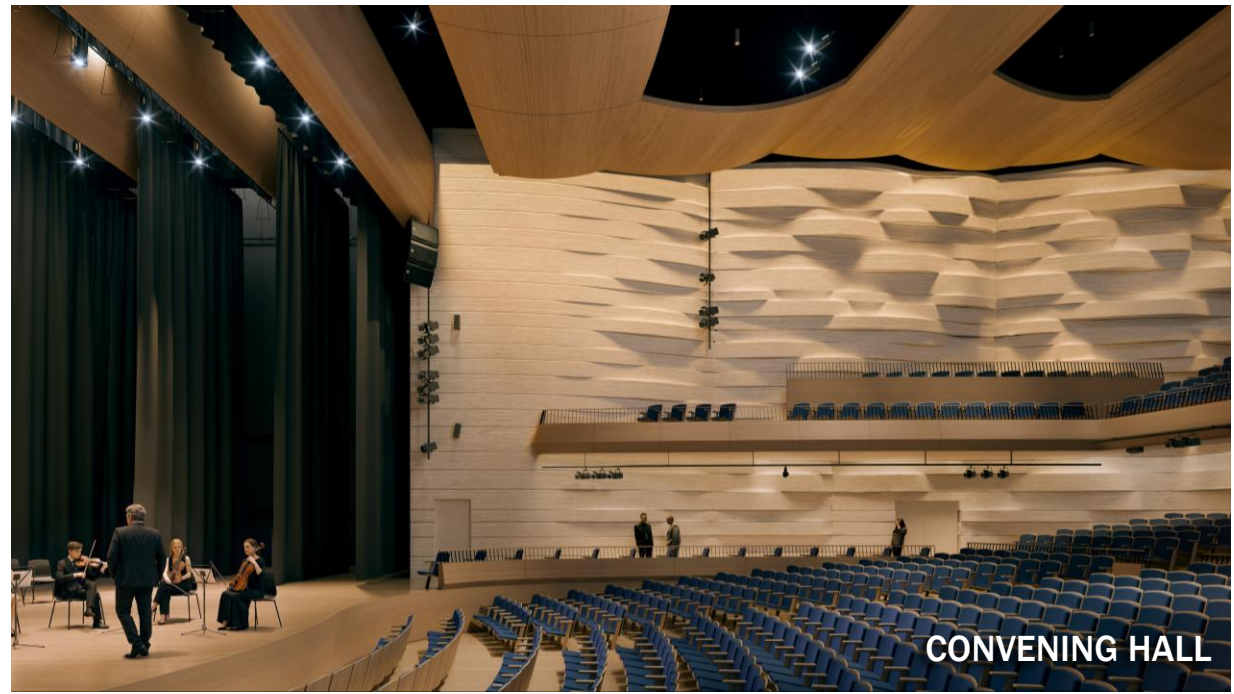
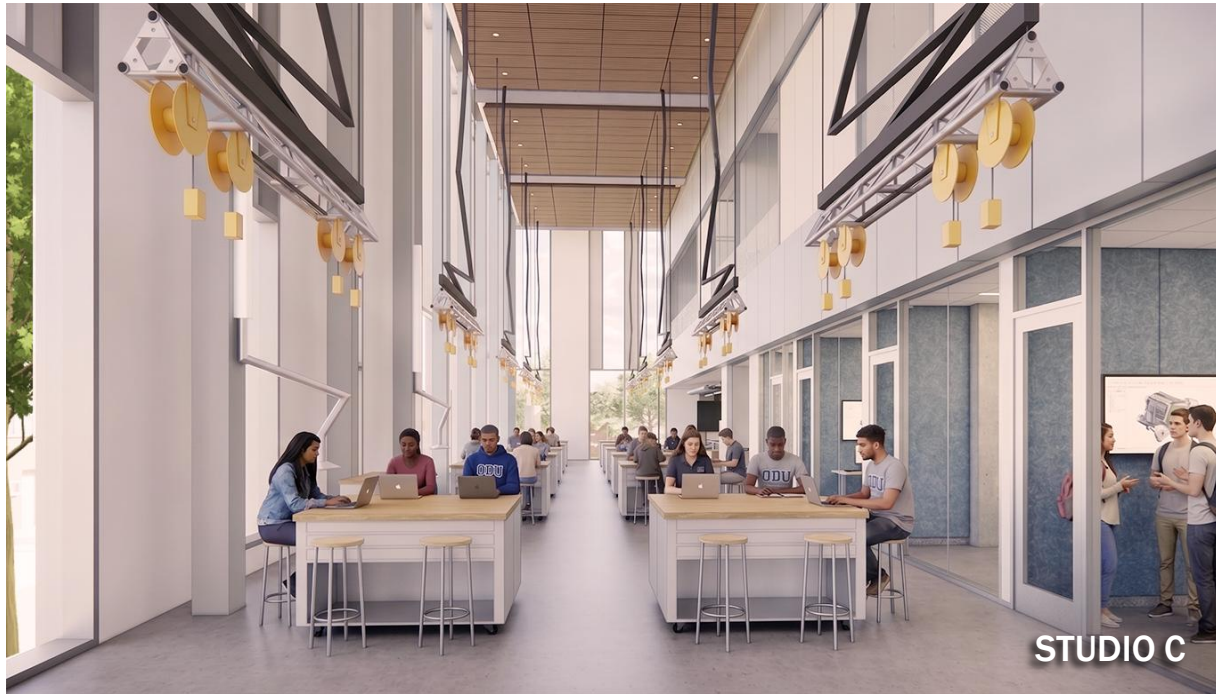


PENTHOUSE

Engineering and Arts



Interior Views



Construct New Engineering and Arts Building



Design Prompts:

Improve the way the building **responds** to surrounding structures and **campus path alignments** – especially from the north and south.

Explore **variation and refinement** of the ways the **exterior panelized system** of brick, metal fins, and fritted glass interact dynamically to mitigate the rectangularity of the design – while further fusing engineering and arts concepts together.

Embrace the **contrast between the rectilinear** form of the building's brick envelope **and the curved** form of the Convening Hall to relate to similar conditions found across campus.

Aerial View from Northeast



Aerial View from West



Aerial View from West



Aerial View from Southwest



Aerial View from Southwest



Campus Context: Recent New Building Projects



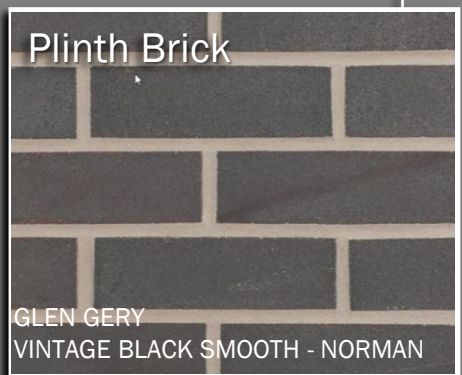
Building Material Palette



Face Brick

FACE BRICK 1
TAYLOR CLAY 313

FACE BRICK 2
TAYLOR CLAY 317



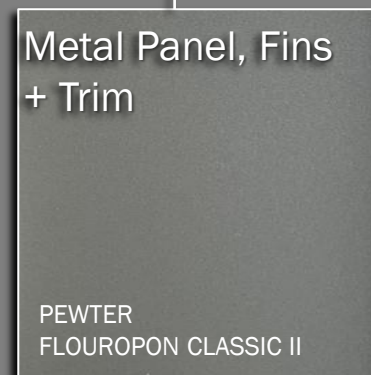
Plinth Brick

GLEN GERY
VINTAGE BLACK SMOOTH - NORMAN



Curtainwall

GUARDIAN SNX 51-23
+ FRIT (BIRD AND CUSTOM)



Metal Panel, Fins
+ Trim

PEWTER
FLOUROPON CLASSIC II

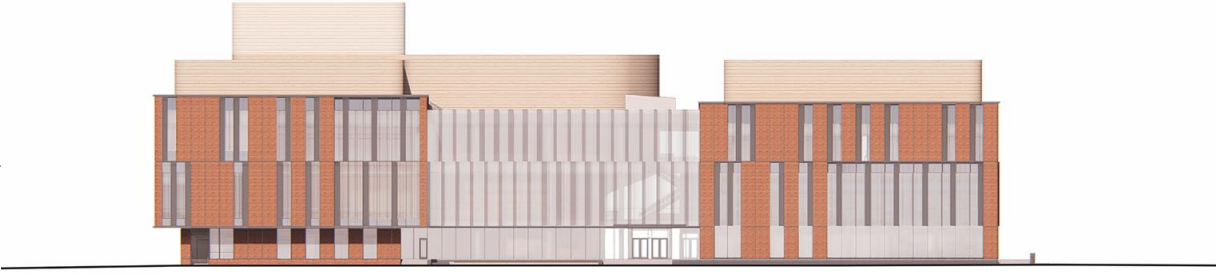


Penthouse

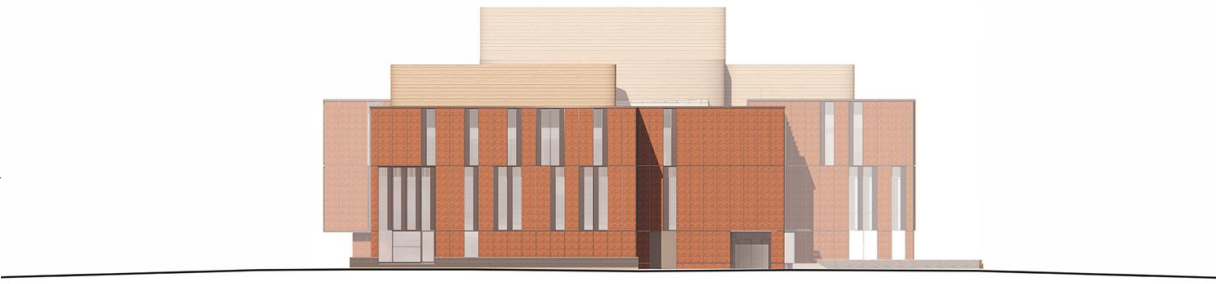
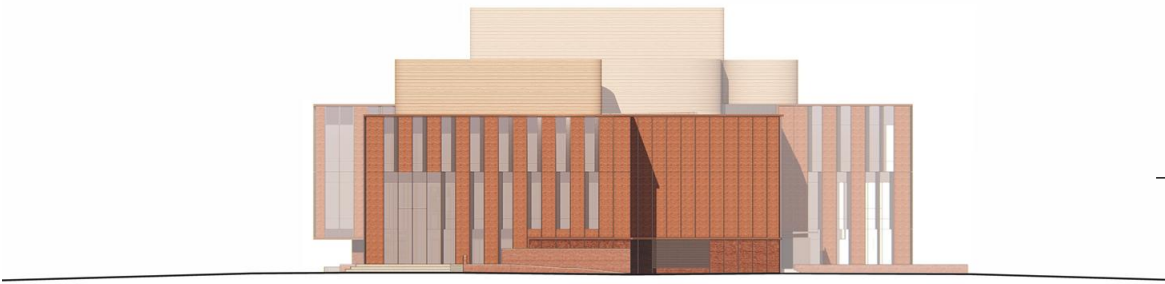
GINGER ALE
FLOUROPON CLASSIC II

Previous SD Elevations

Revised PD Elevations

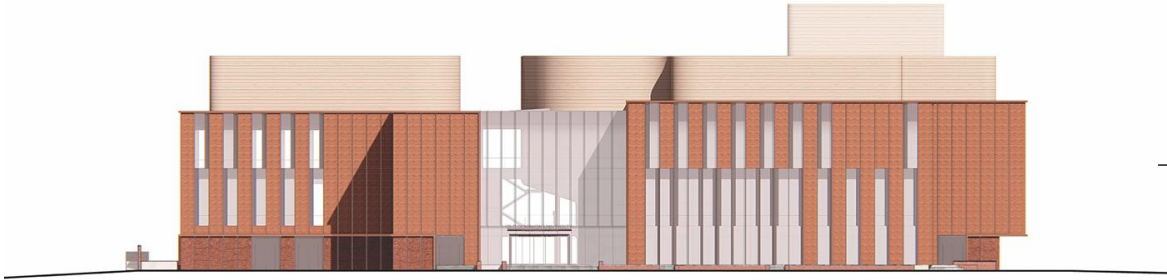


EAST



NORTH

Previous SD Elevations



Revised PD Elevations



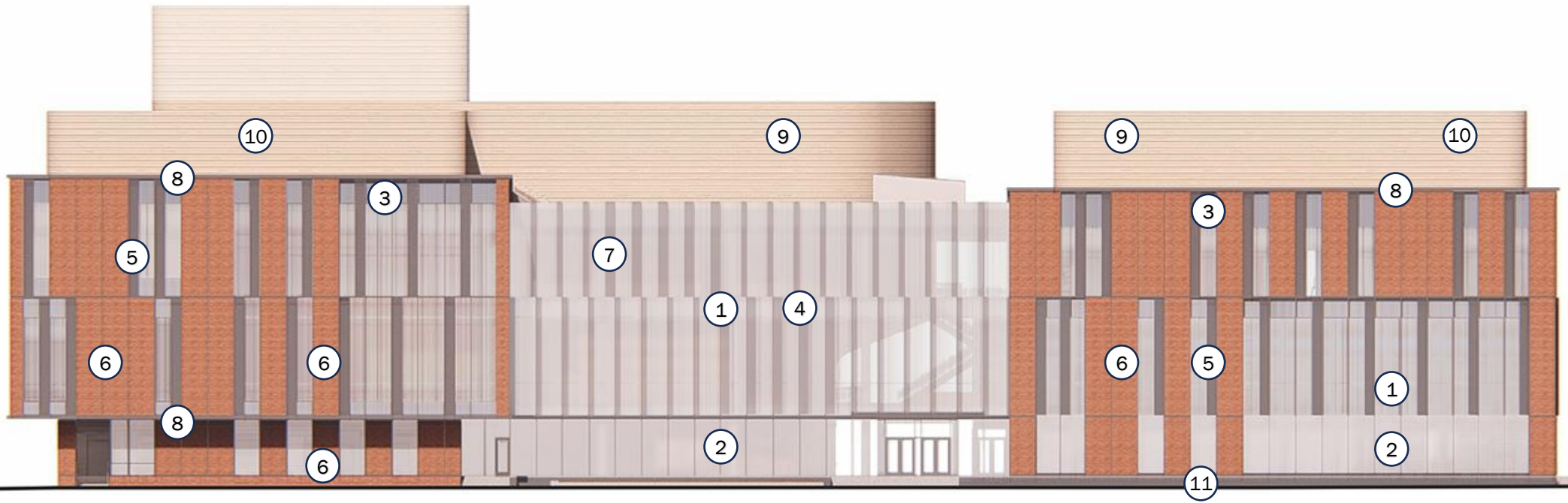
WEST



SOUTH

East Elevation

- ① GLAZED ALUMINUM CURTAINWALL
- ② LOW-E ULTRA CLEAR GLASS
- ③ LOW-E ULTRA CLEAR SPANDREL
- ④ ALUMINUM VERTICAL FIN
- ⑤ GLAZED-IN METAL PANEL
- ⑥ THIN BRICK PRECAST PANEL
- ⑦ CERAMIC ENAMEL FRIT - CUSTOM PATTERN
- ⑧ METAL COPING AND SOFFIT PANEL
- ⑨ FORMED METAL WALL PANEL
- ⑩ FORMED METAL WALL PANEL SCREEN
- ⑪ BRICK PLINTH



View from East at 45th Street



View from East at 45th Street



View of Lobby from East



View of Lobby from East - Detail



View from Northeast



Previous SD



Revised PD

View from Northeast



View from North



View from West at “The Oval”



Previous SD



Revised PD

View from West at "The Oval"



View from West at "The Oval"



View from West at "The Oval"



View From South



Previous SD



Revised PD

View from South



View from South



View from South



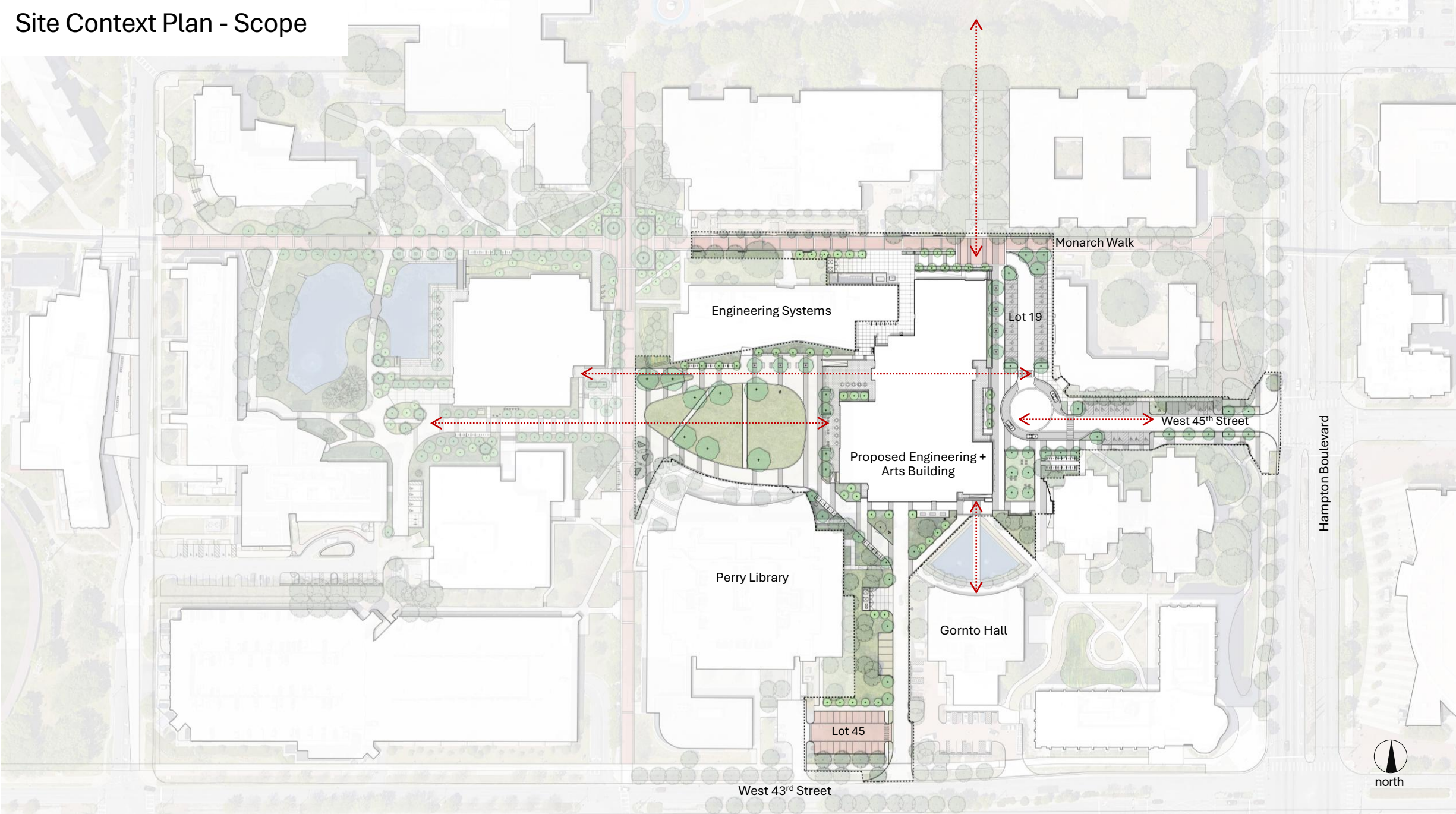
View from Hampton Boulevard



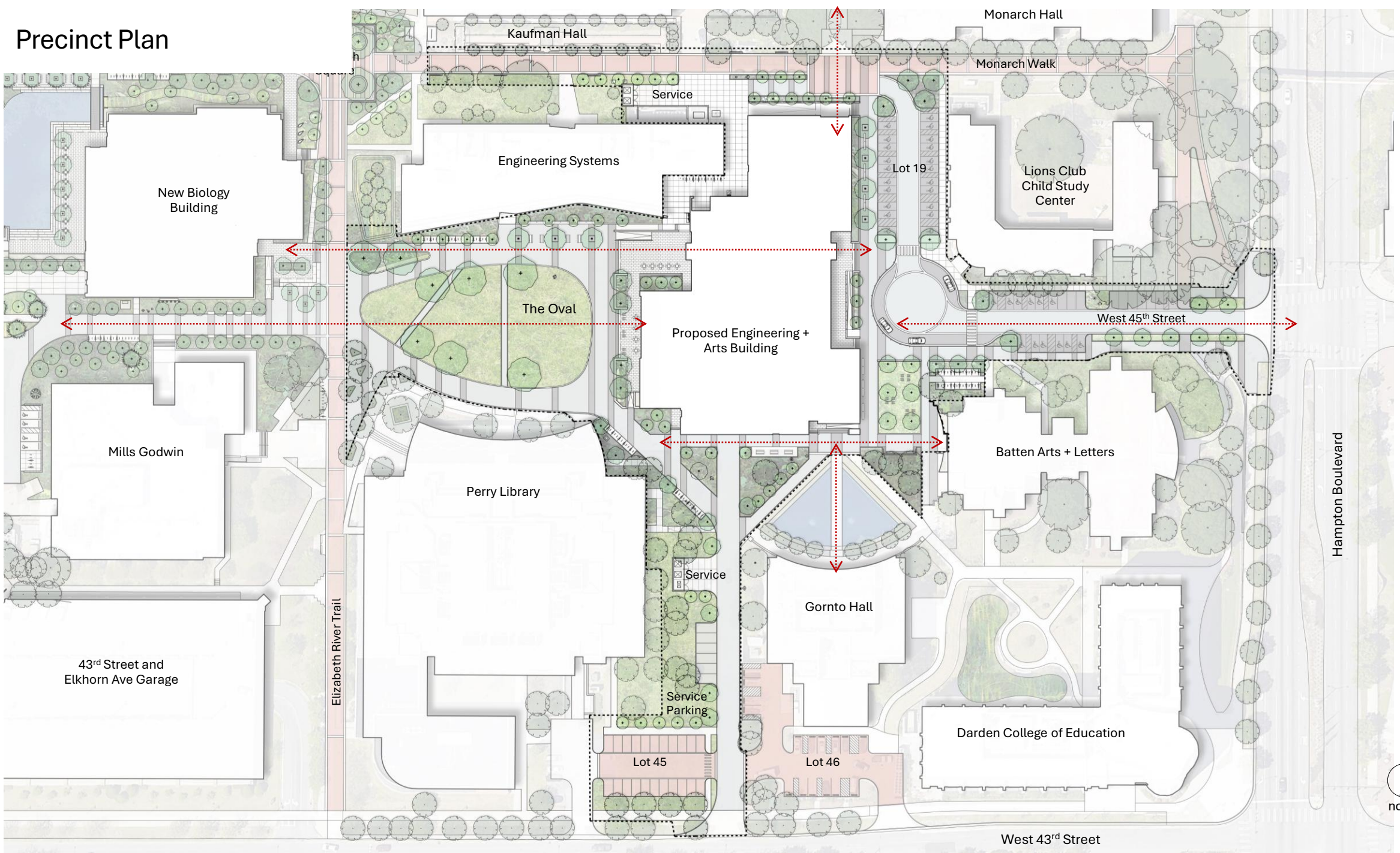
View from Hampton Boulevard



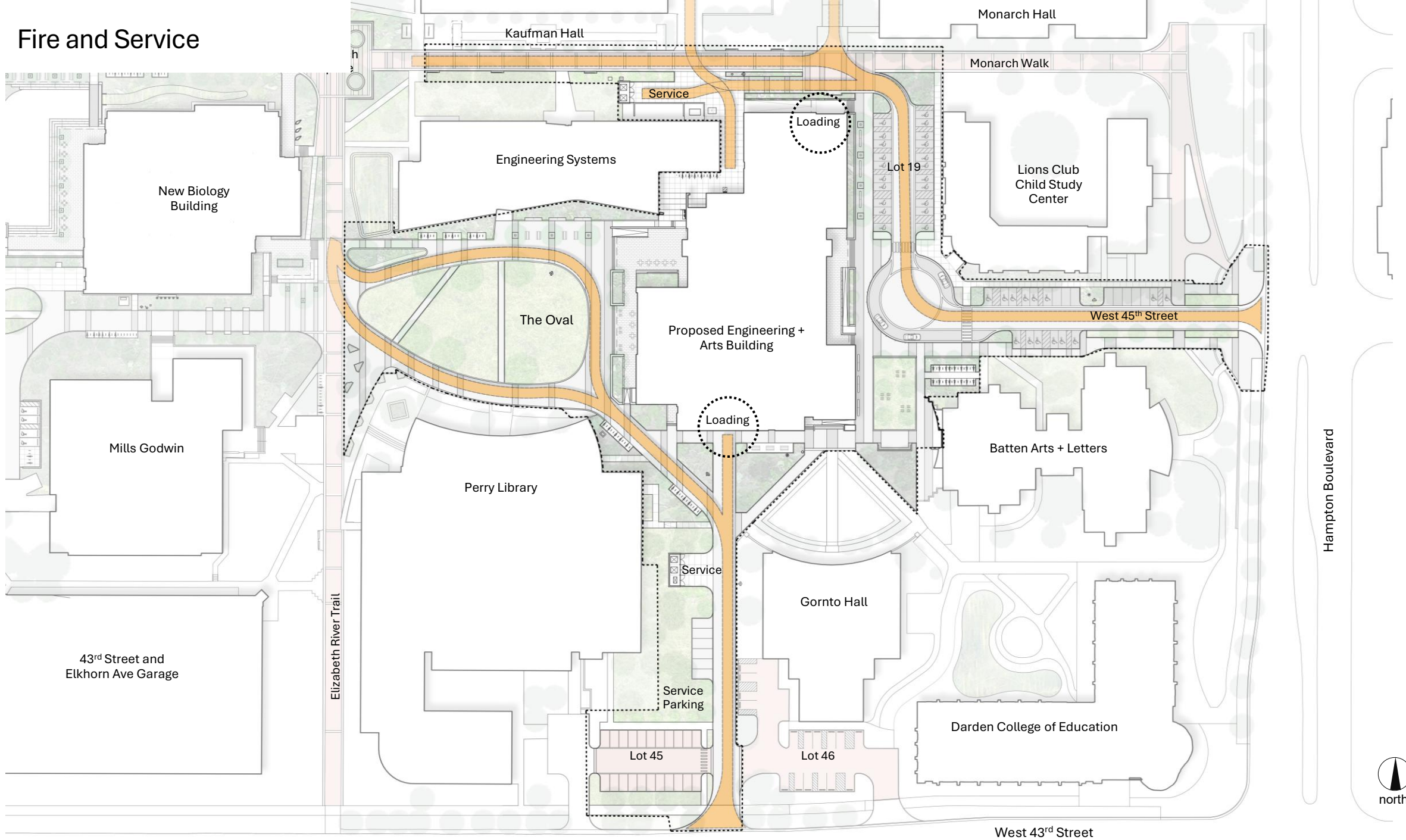
Site Context Plan - Scope



Precinct Plan



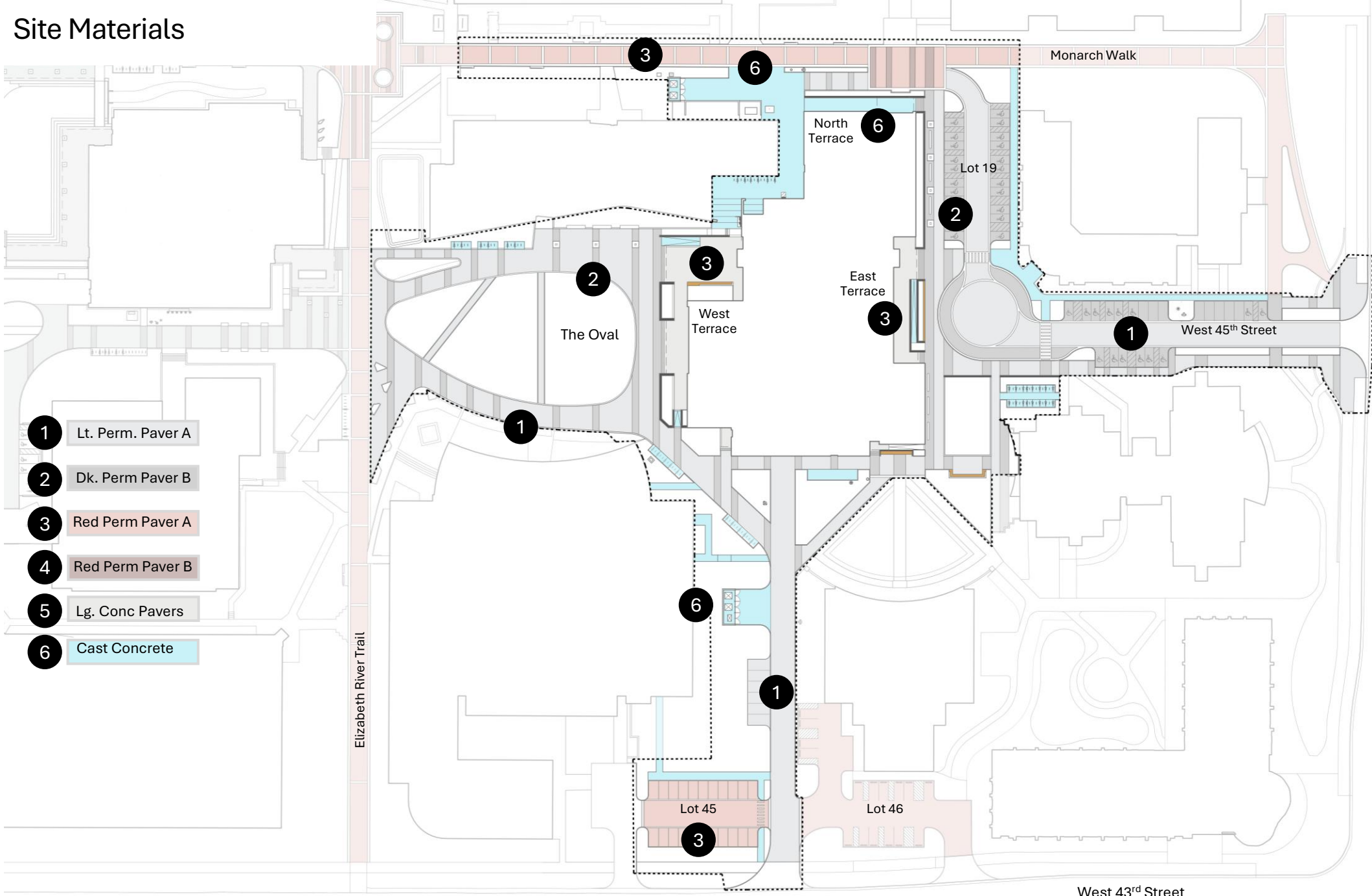
Fire and Service



Hampton Boulevard



Site Materials



- 1 Lt. Perm. Paver A
- 2 Dk. Perm Paver B
- 3 Red Perm Paver A
- 4 Red Perm Paver B
- 5 Lg. Conc Pavers
- 6 Cast Concrete

Hampton Boulevard



north

West 43rd Street

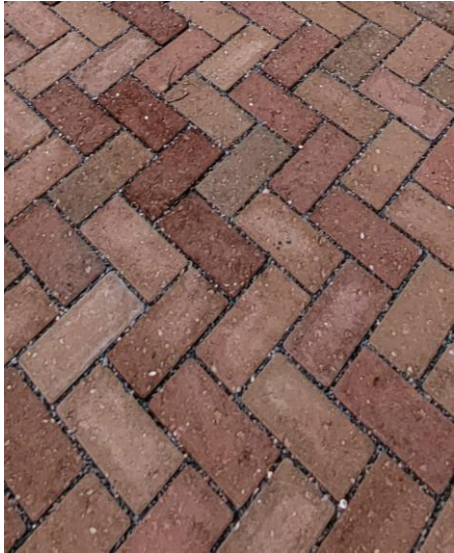
Site Hardscape and Furnishings



ODU Standard Grey Cobble Mix



ODU Standard Dark Gray Accent Band



ODU Standard Red Mix



Grey Large Format Paver



Grey Large Format Concrete Paver



Wall Bricks



Precast Stair and Wall Cap and Stainless Railings

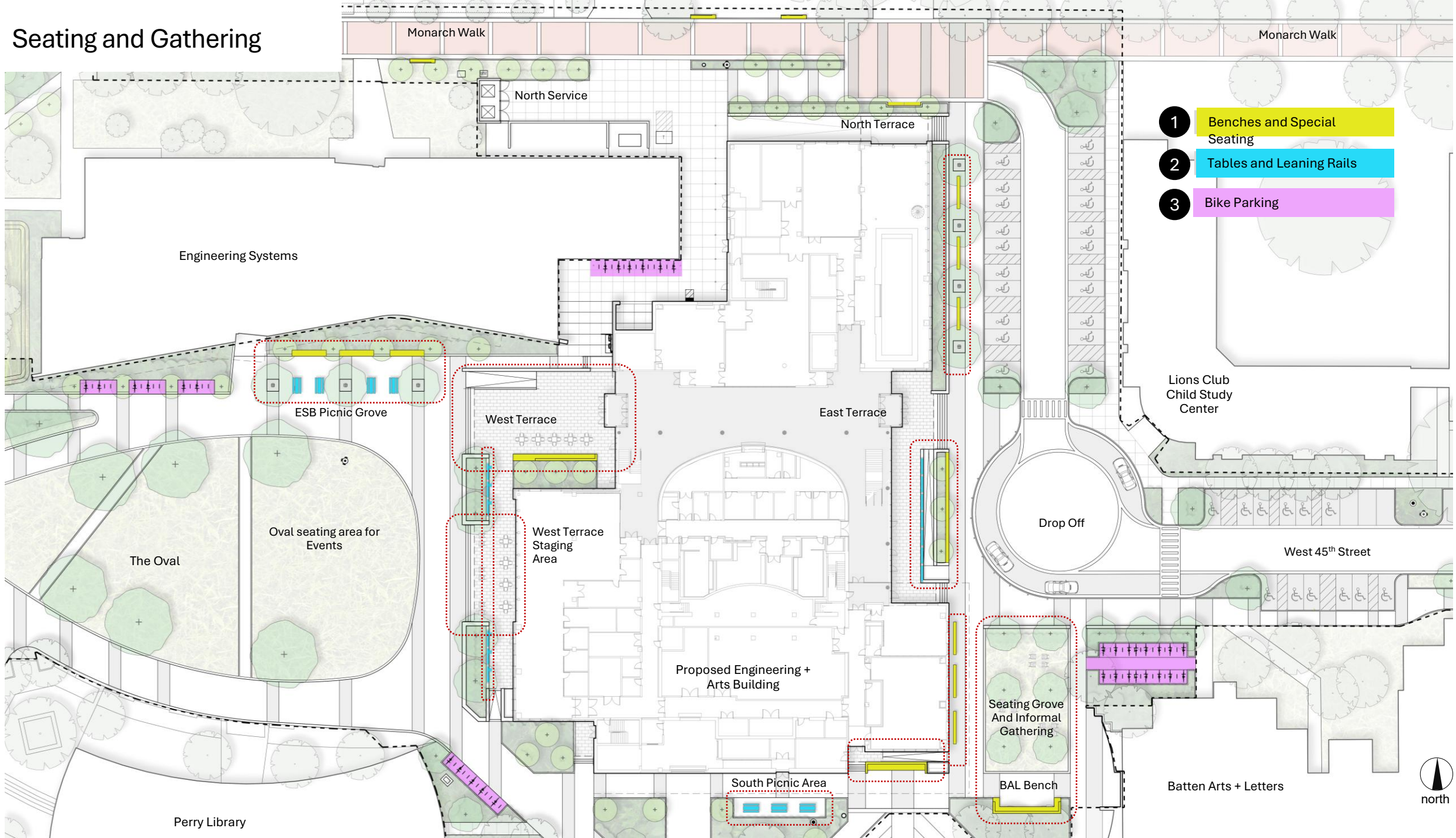


ODU Standard Bike Rack



Cast Aluminum Tree Grate - Jamison

Seating and Gathering



Site Furnishings



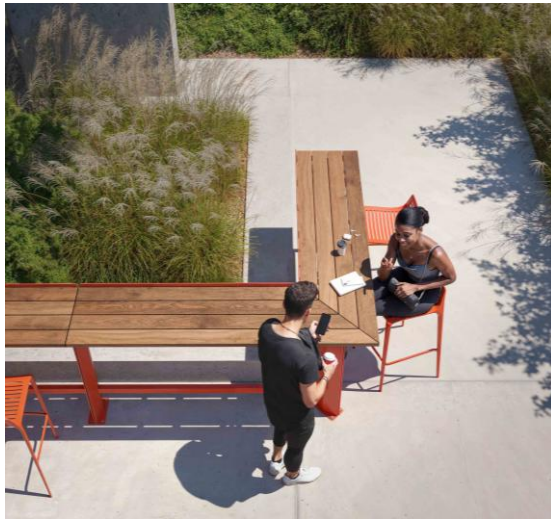
ODU Standard Palisade Bench by Landscape Forms



Custom Link on Precast Bench by Landscape Forms-Seating material to be Metal



Picnic tables – ODU Standard 'Breakwater' by Keystone Ridge



Link Rail Table by Landscape Forms. To be Metal finish



Link Rail and Chipman Stool by Landscape Forms






Chipman Tables and Chairs by Landscape Forms



ODU Standard Lollygagger Lounge Chairs by Loll

Site Planting

TREE PLANTING

-  Existing Tree
-  Proposed Canopy Tree
-  Proposed Understory Tree

PROPOSED CANOPY PALETTE

1. Live Oak
2. Southern Red Oak
3. Swamp Chestnut Oak
4. Swamp White oak
5. Willow Oak
6. Bald Cypress
7. Jefferson Elm
8. Honey Locust
9. Black Gum
10. Red Maple

PROPOSED UNDERSTORY PALETTE

1. Serviceberry
2. Sweetbay Magnolia
3. Fringetree
4. Silverbell
5. Witchhazel
6. Red Chestnut

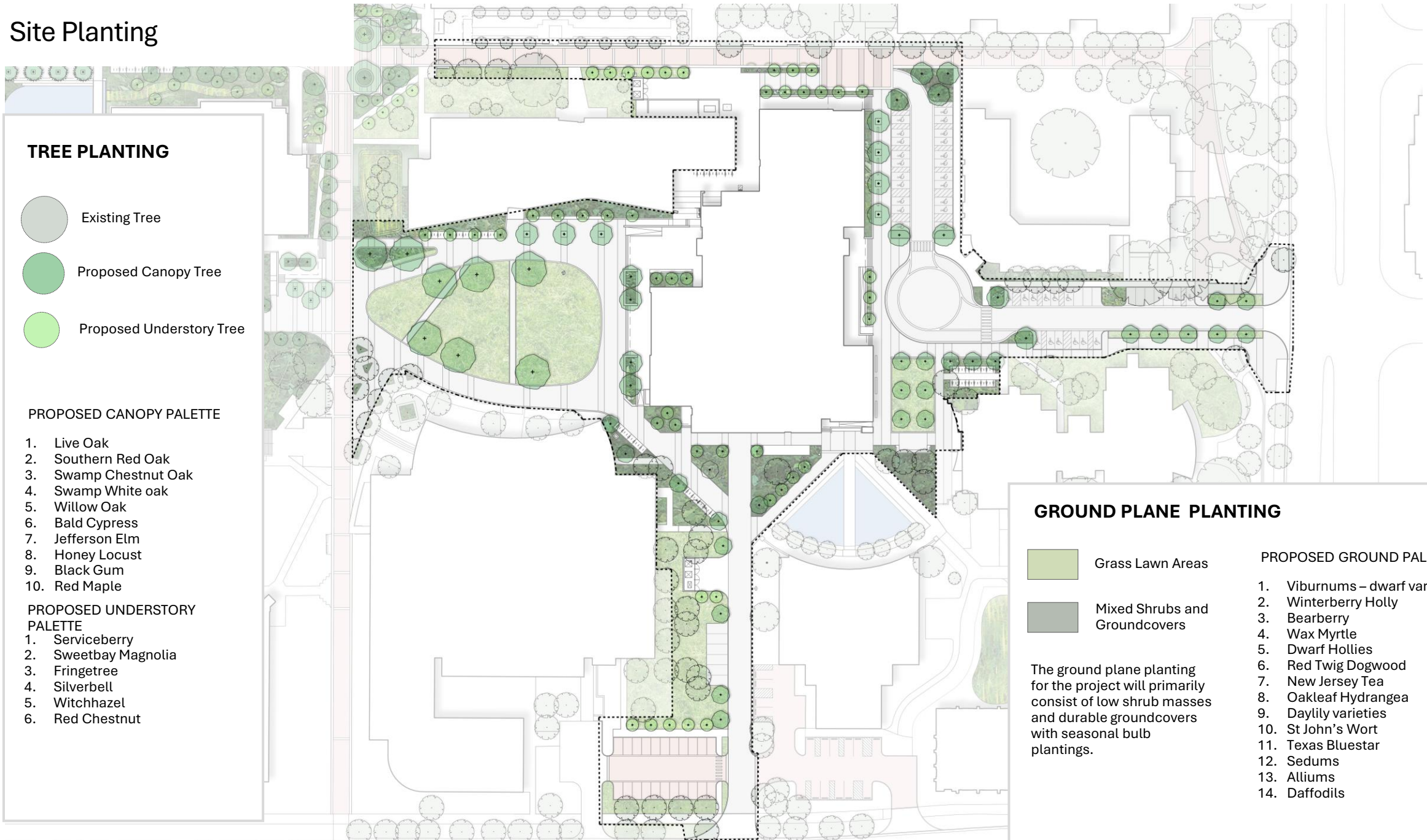
GROUND PLANE PLANTING

-  Grass Lawn Areas
-  Mixed Shrubs and Groundcovers

The ground plane planting for the project will primarily consist of low shrub masses and durable groundcovers with seasonal bulb plantings.

PROPOSED GROUND PALETTE

1. Viburnums – dwarf vars
2. Winterberry Holly
3. Bearberry
4. Wax Myrtle
5. Dwarf Hollies
6. Red Twig Dogwood
7. New Jersey Tea
8. Oakleaf Hydrangea
9. Daylily varieties
10. St John's Wort
11. Texas Bluestar
12. Sedums
13. Alliums
14. Daffodils



Site Plant Palette



Honey Locust



Bald Cypress



Black Gum



Jefferson Elm



Jefferson Elm



S. Red Oak



Willow Oak



Serviceberry



Sweetbay



Witchhazel



Silverbell



Fringetree



Red Chestnut



Hornbeam



Viburnums



Redosier Dogwood



Winterberry



Sweetfern



New Jersey Tea



Daylilies



Drifts of Bulbs

View from Hampton Boulevard



THANK YOU.